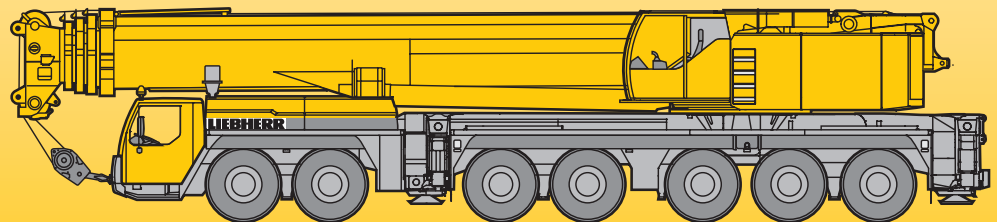


Mobile Crane Grue mobile

LTM 1400-7.1

Technical Data
Caractéristiques techniques



LIEBHERR

Lifting capacities on telescopic boom Forces de levage à la flèche télescopique

		51 - 197 ft		360°		264600 lbs		85%													
		51 ft		67 ft		84 ft		101 ft		118 ft		135 ft		152 ft		169 ft		186 ft		197 ft	
ft		ft		ft		ft		ft		ft		ft		ft		ft		ft		ft	
9	970																				9
10	940																				10
11	748																				11
12	615																				12
13	539																				13
14	529																				14
15	528																				15
16	526																				16
17	515																				17
18	499																				18
20	469																				20
22	443	392	391	385																	22
24	414	380	379	374	300	262															24
26	383	357	357	354	329	274	209	177													26
28	357	337	336	334	320	266	202	172	143												28
30	332	317	317	315	306	255	193	166	142												30
32	310	300	299	297	294	245	186	161	137	115											32
34	292	285	284	282	281	236	178	156	134	114											34
36	276	271	270	268	268	227	171	151	130	111											36
38	260	256	256	254	255	219	164	146	126	109	94										38
40			243	240	242	211	158	141	123	106	93										40
45			217	213	215	194	144	130	115	100	88.5										45
50			194	192	192	180	135	119	107	95	83.5										50
55			174	174	172	167	127	110	99.5	90	79										55
60				157	155	155	120	102	93	84.5	75										60
65				142	140	143	114	94	86.5	79.5	71.5										65
70				130	128	131	108	87.5	81	75	67.5										70
75					118	120	103	81.5	76	70.5	64										75
80					110	110	97.5	76.5	71.5	66.5	60.5										80
85					104	102	93	72.5	67	63	57.3										85
90					97.5	94.5	88.5	69.5	63	59.5	54.6										90
95						88	84.5	66.5	59.1	56.4	51.9										95
100						82	81	63.5	55.6	53.3	49.2										100
105							78	61	52.6	50.4	46.6										105
110							74	58.2	49.8	48	44.2										110
115							69.5	56.2	47.4	45.6	42.1										115
120							65.5	54.4	45.2	43.3	40.1										120
125								52.7	43.2	41.2	38.3										125
130								51.1	41.7	39.1	36.6										130
135								49.6	40.3	37.1	34.9										135
140								46.5	38.9	35.3	33.3										140
145									37.6	33.8	31.7										145
150									36.3	32.4	30.2										150
155									35.1	31.1	29										155
160											28										160
165											28.5										165
170											27.2										170
175											26										175
180											23.8										180
185											22.3										185
190											19.4										190

* over rear / en arrière

TAB 146426 / 146428

Remarks referring to load charts

1. The tabulated lifting capacities do not exceed 85% of the tipping load.
2. The crane's structural steelwork is in accordance with DIN 15018, part 3. Design and construction of the crane comply with DIN 15018, part 2, and with F.E.M. regulations.
3. The 85% overturning limit values take into account wind force 5 = wind speed 20 mph.
4. Lifting capacities are given in kips.
5. The weight of the hook blocks and hooks must be deducted from the lifting capacities.
6. Working radii are measured from the slewing centreline.
7. The lifting capacities given for the telescopic boom only apply if the folding jib is taken off.
8. Lifting capacities are subject to modifications.
9. Lifting capacities above 445 kips / 529 kips only with additional pulley block / special equipment.

Lifting capacities on telescopic boom Forces de levage à la flèche télescopique

ft	51 ft		67 ft		84 ft		101 ft		118 ft		135 ft		152 ft		169 ft		186 ft		197 ft		ft
	*																				
9	970																				9
10	940	529																			10
11	748	529	445																		11
12	615	529	445																		12
13	539	529	445	445																	13
14	529	519	445	445	379																14
15	528	506	445	445	379																15
16	525	489	445	445	379																16
17	514	473	442	440	379																17
18	498	457	437	432	379	318															18
20	466	425	424	415	377	316															20
22	429	397	397	392	365	302	225														22
24	394	372	371	369	351	289	220														24
26	363	348	347	346	334	277	210	177													26
28	337	327	326	325	320	266	202	172	143												28
30	313	307	307	305	305	255	193	166	142												30
32	293	290	289	287	288	245	186	161	137	115											32
34	276	274	274	271	273	236	178	156	134	114											34
36	260	259	260	257	259	227	171	151	130	111											36
38	245	245	246	242	244	219	164	146	126	109	94										38
40			233	229	231	211	158	141	123	106	93										40
45			205	204	203	194	144	130	115	100	88.5										45
50			183	181	179	179	135	119	107	95	83.5										50
55			164	161	159	162	127	110	99.5	90	79										55
60				145	143	145	120	102	93	84.5	75										60
65				131	132	131	114	94	86.5	79.5	71.5										65
70				122	121	119	108	87.5	81	75	67.5										70
75					111	109	103	81.5	76	70.5	64										75
80					102	99.5	97.5	76.5	71.5	66.5	60.5										80
85					94	91.5	93	72.5	67	63	57.3										85
90					87.5	85	87	69.5	63	59.5	54.6										90
95						79	81	66.5	59.1	56.4	51.9										95
100						74	75.5	63.5	55.6	53.3	49.2										100
105							70.5	61	52.6	50.4	46.6										105
110							66	58.2	49.8	48	44.2										110
115							61.5	56.2	47.4	45.6	42.1										115
120							57.8	54.4	45.2	43.3	40.1										120
125								52.7	43.2	41.2	38.3										125
130								51.1	41.7	39.1	36.6										130
135								48.7	40.3	37.1	34.9										135
140								45.4	38.9	35.3	33.3										140
145									37.6	33.8	31.7										145
150									36.3	32.4	30.2										150
155									35.1	31.1	29										155
160										29.8	28										160
165										28.5	26.9										165
170										27.2	25.8										170
175										26	24.8										175
180											23.8										180
185											22.3										185
190											19.4										190

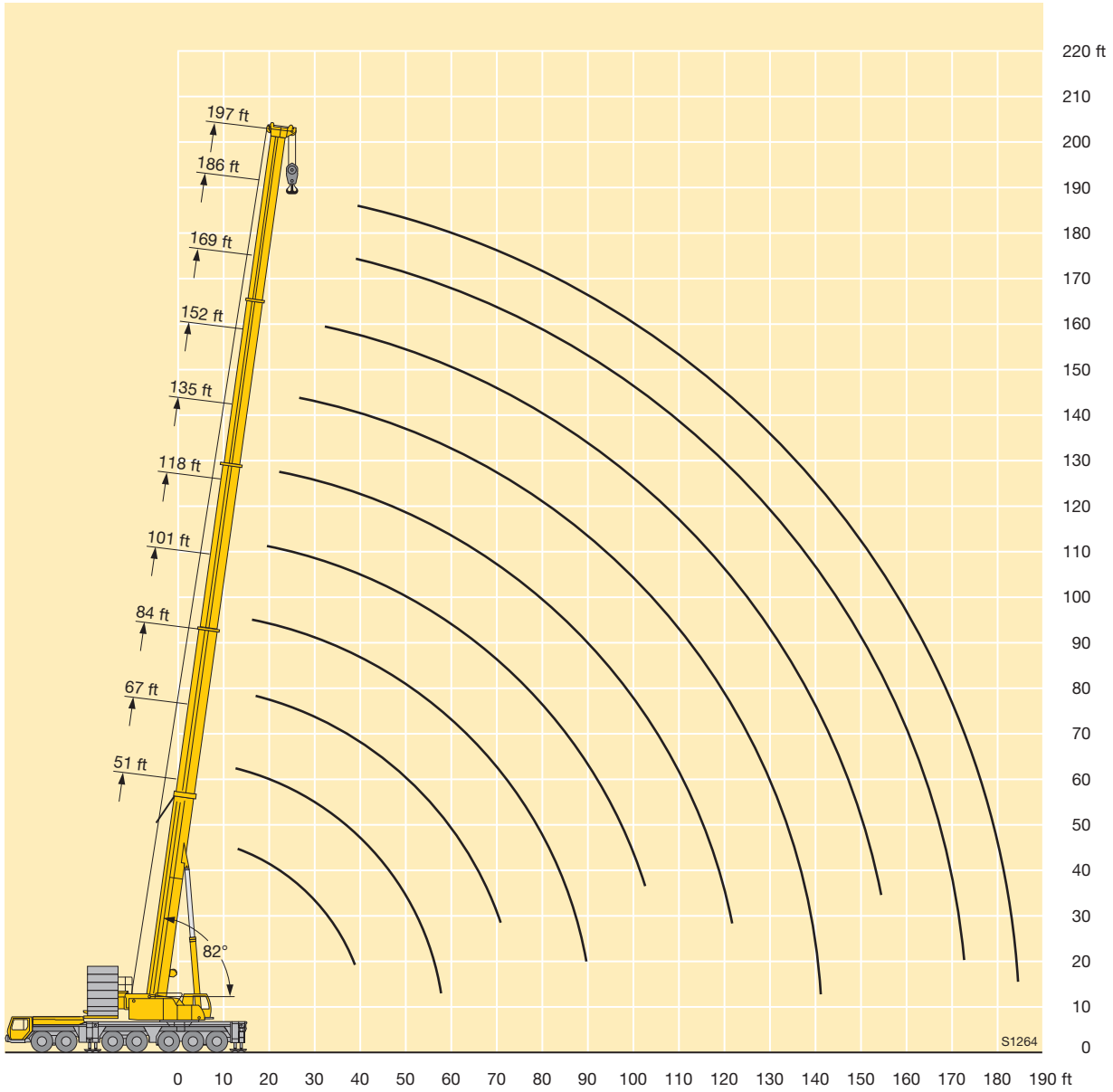
* over rear / en arrière

TAB 146427 / 146430

Remarques relatives aux tableaux des charges

1. Les forces de levage indiquées ne dépassent pas 85% de la charge de basculement.
2. La norme DIN 15018, 3ème partie est appliquée pour les charpentes. La construction de la grue est réalisée conformément à la norme DIN 15018, 2ème partie, et aux règles de la F. E. M.
3. A 85% de la charge de basculement, il a été tenu compte d'un vent de force 5 = vitesse de vent 20 mph.
4. Les forces de levage sont données en kips.
5. Le poids des mouffes et crochets doit être soustrait des charges indiquées.
6. Les portées sont calculées à partir de l'axe de rotation.
7. Les forces indiquées pour la flèche télescopique s'entendent fléchette dépliée.
8. Les forces de levage sont modifiables sans préavis.
9. Forces de levage plus de 445 kips / 529 kips seulement avec moufle additionnel / équipement supplémentaire.

Lifting heights Hauteurs de levage



Lifting capacities on guyed telescopic boom Forces de levage à la flèche télescopique haubanée

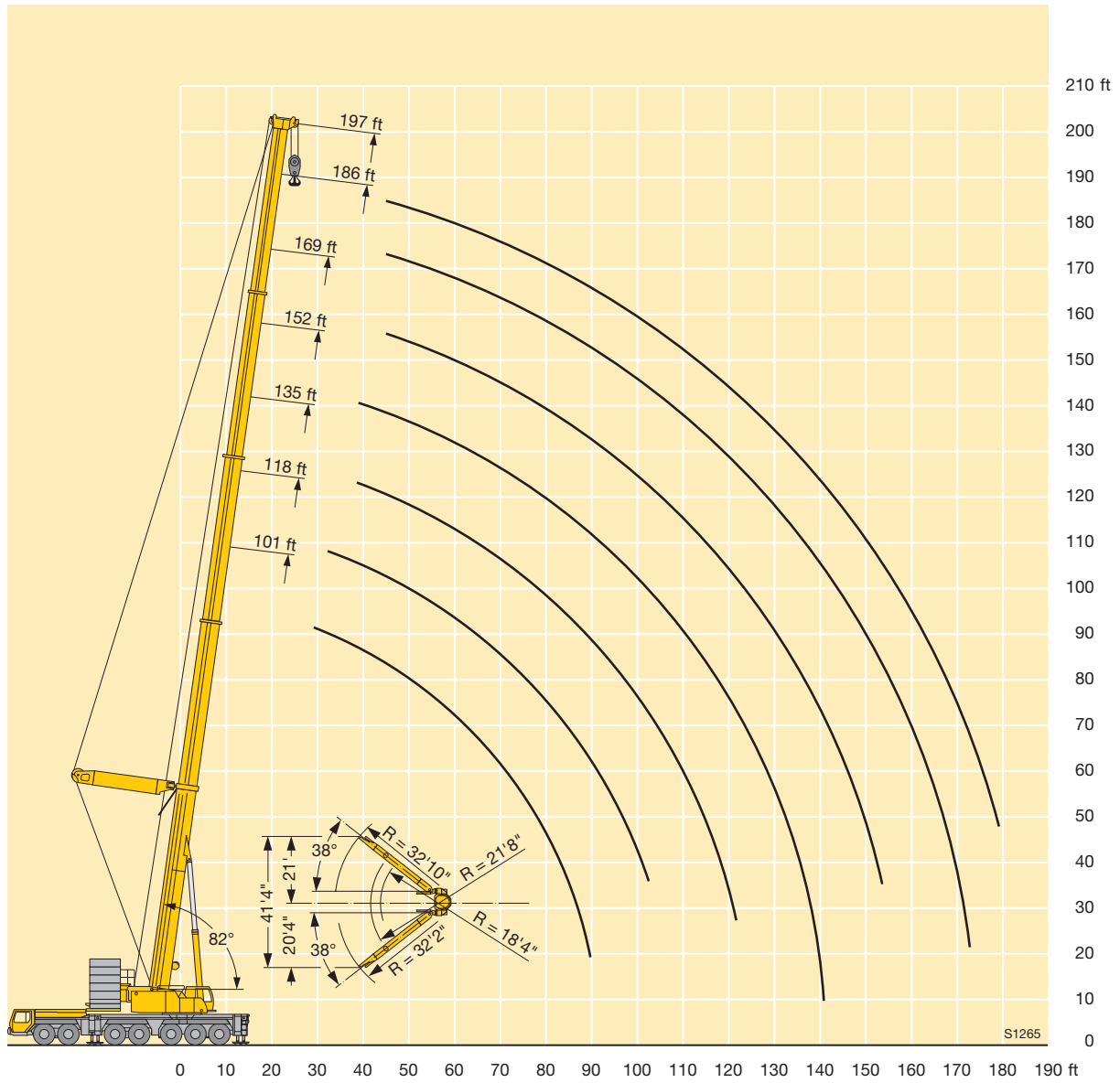


ft	101 ft		118 ft		135 ft		152 ft		169 ft		186 ft		197 ft		ft
	*	*	*	*	*	*	*	*	*	*	*	*	*		
16	416													16	
17	413													17	
18	408		361											18	
20	396		360											20	
22	377		351		320									22	
24	357		339		313									24	
26	337		324		301									26	
28	319		312		290		252							28	
30	301	261	299		280		250							30	
32	285	284	285	251	270		242		211					32	
34	270	286	272	251	260		234		207					34	
36	257	273	259	251	250		227		201					36	
38	244	261	246	251	240		220	215	195		166		152	38	
40	231	249	234	248	230	213	213	213	190		164		151	40	
45	205	223	209	224	207	216	195	195	178	176	154	153	142	141	45
50	184	200	188	203	188	200	181	181	167	167	146	146	135	135	50
55	166	180	169	184	170	182	167	169	157	157	137	137	128	128	55
60	152	163	153	167	154	166	153	158	146	147	130	130	121	121	60
65	139	148	139	152	140	153	140	148	135	137	123	123	115	115	65
70	127	138	127	140	128	141	128	138	126	128	116	116	109	109	70
75	116	128	117	129	118	130	118	129	117	120	110	110	104	104	75
80	106	118	107	118	108	119	108	119	108	114	104	104	98.5	98.5	80
85	98	108	99	109	100	110	100	110	99.5	108	98	98.5	93.5	93.5	85
90	90.5	99	91.5	102	92.5	103	92.5	103	92	102	91	94	89	89	90
95			85	94.5	86	95.5	86	95.5	85.5	95	84.5	89.5	84	85	95
100			79	88	80	89	80	89	79.5	88.5	78.5	85.5	78.5	81.5	100
105					74.5	83	74.5	83	74	82.5	72.5	81.5	73	78	105
110					69.5	78	69.5	78	69	77.5	68	76	68	74.5	110
115					65	73	65	73	64.5	72.5	63.5	71.5	63.5	71	115
120					61	68.5	61	68.5	60	68	59.1	67	59.4	67	120
125							56.9	64.5	56.4	64	55.3	62.5	55.5	63	125
130							53.4	60.5	52.9	60	51.8	58.9	52.1	59.1	130
135							50.2	57.1	49.7	56.6	48.6	55.4	48.8	55.6	135
140							43.9	48.3	46.7	53.3	45.6	52.2	45.8	52.4	140
145									44	50.3	42.8	49.1	43	49.4	145
150									41.4	47.6	40.2	46.3	40.4	46.6	150
155									39.1	44.6	37.8	43.7	38	44	155
160											35.5	41.3	35.8	41.5	160
165											33.4	39	33.6	39.2	165
170											31.4	36.8	31.6	37.1	170
175											26.5	28.3	29.7	35.1	175
180												28	33.2	180	180

* ballast retracted / contrepoids rétracté

TAB 146439 / 146434

Lifting heights Hauteurs de levage



Lifting capacities on the lattice fly jib Forces de levage à la fléchette treillis fixe

		51 ft		23 - 184 ft		360°		264600 lbs		85%		51 ft + 8 ft*																			
		23 ft		46 ft				69 ft				92 ft				115 ft				138 ft				161 ft				184 ft			
		0°		20°		40°		0°		20°		40°		0°		20°		40°		0°		20°		40°		0°		0°			
26	73																													26	
28	69.5																													28	
30	65.5					63.5																								30	
32	62	50.6			60.5			54.1				43.4				34.5			28.2											32	
34	58.6	49.7			58.2			53.1				42.9				34.1			27.9											34	
36	55.7	48.2			55.7			51.5				42				33.5			27.3											36	
38	52.8	46.7			53.2			49.8				41.1				32.9			26.8				21					16.6		38	
40	50.2	45.3			50.8			48.2				40.2				32.2			26.3				20.9					16.5		40	
45	44.3	42.5	37.1	45.6	41.2			44.3				37.8				30.4			25.1				19.9					15.6		45	
50	39.3	39.9	36.6	41.3	39			40.5				35.7				28.6			23.8				18.9					14.9		50	
55	35.2	37	35.7	37.3	36.7			36.9	39			33.7				27			22.5				18					14.2		55	
60	31.9	33.5	34.6	33.7	34.7	30		33.8	37.1			31.6	28.9			25.5			21.2				17.2				13.4		60		
65	28.9	30.2	33.8	30.3	33	29.1	31	34.5	30.6	29.4	27.6		24.2	21.9		20.1			20.1				16.2				12.7		65		
70	25.7	26.7			27.7	30.4	28.6	28.4	32	29.6	27.4	26.5		23	20.9		19			19			15.3				12.1		70		
75					25.5	27.8	27.8	26	29.6	28.5	25.4	25.4		21.9	19.9		18			18			14.5				11.4		75		
80					23.5	25.3	26.5	23.8	27.3	27.7	23.5	24.4	21.5	20.8	19		17.1	15.2		17.1	15.2		13.7				10.8		80		
85					21.7	23	23.9	21.8	24.9	27	21.7	23.4	20.8	19.9	18.2		16.2	14.4		16.2	14.4		13				10.2		85		
90					20	20.9	23.7	20.3	22.8	25.4	20	22.5	20.2	18.8	17.4		15.5	13.8		15.5	13.8		12.3	10.8			9.7		90		
95								18.9	20.9	23.3	18.3	21.3	19.6	17.6	16.7	14.7	14.8	13.2		14.8	13.2		11.7	10.5			9.2		95		
100								17.6	19.2	21	16.8	20	19.2	16.3	16	14.6	14.1	12.6		14.1	12.6		11.2	10			8.8		100		
105								16.3	17.7	18.9	15.6	18.5	18.9	15	15.4	14	13.5	12.1		13.5	12.1		10.7	9.5			8.3		105		
110								15.1	16.3	18.2	14.7	17	18.5	13.9	15	13.6	12.9	11.6		12.9	11.6		10.3	9.1			7.9		110		
115								13.9	14.8			13.8	15.7	17.6	13	14.5	13.3	12.4	11.1		11.1	10	9.8	8.8			7.5		115		
120												13	14.5	16.3	12.2	14.1	12.9	11.8	10.7	9.8		9.4	8.4				7.2		120		
125												12.1	13.4	14.9	11.5	13.5	12.6	11	10.4	9.5	9	8					6.8		125		
130												11.3	12.4	13.4	10.8	12.5	12.5	10.2	10.1	9.3	8.6	7.7					6.5		130		
135												10.5	11.3		10.1	11.6	12.4	9.6	9.8	9.1	8.3	7.4	6.6				6.1		135		
140														9.5	10.8	12	9	9.6	8.9	7.9	7.2	6.5	5.8				5.8		140		
145														8.9	10.1	11.4	8.5	9.3	8.7	7.6	7	6.3	5.5				5.5		145		
150														8.3	9.3	10.4	8	9.1	8.6	7.2	6.7	6.1	5.2				5.2		150		
155														7.7	8.6	10	7.5	8.8	8.5	6.7	6.5	5.9	4.9				4.9		155		
160														7.1	7.8		7	8.3	8.4	6.1	6.3	5.8	4.7				4.7		160		
165																	6.5	7.6	8.3	5.6	6.1	5.7	4.3				4.3		165		
170																	6.1	7	8.2	5.2	5.9	5.6	3.9				3.9		170		
175																	5.6	6.4	7.4	4.7	5.8	5.5	3.5				3.5		175		
180																	5.2	5.8		4.2	5.6	5.4	3				3		180		
185																				3.8	5.3	5.3	2.6				2.6		185		
190																				3.3	4.7	5.3	2.4				2.4		190		
195																				2.9	4.1	5.1	2.4				2.4		195		
200																				2.6	3.5	5	2.4				2.4		200		
205																				2.4	2.9						2.4		205		
210																											2.4		210		
215																											2.4		215		
220																											2.4		220		
225																											2.4		225		

* adapter / pièce d'adaptateur

Lifting capacities on the lattice fly jib Forces de levage à la fléchette treillis fixe



ft	152 ft + 8 ft*																								ft
	23 ft			46 ft			69 ft			92 ft			115 ft			138 ft			161 ft			184 ft			
	0°	20°	40°	0°	20°	40°	0°	20°	40°	0°	20°	40°	0°	20°	40°	0°	20°	40°	0°	20°	40°	0°			
32	104																							32	
34	102																							34	
36	100																							36	
38	97.5	64		79.5																				38	
40	95	64		79																				40	
45	89.5	61	44.3	75			60																	45	
50	84	58.1	43.4	71.5	50.2		58.5			44.4			34.6											50	
55	79	55.7	42.4	67.5	49.2		56.5			43.7			34.1			26.7								55	
60	74.5	53.5	41.4	64	47.2		54.3			42.4			33.1			26.5								60	
65	69.5	51.5	40.5	60.5	45.4	33.7	51.8			41.1			32.1			25.7			20					65	
70	65.5	49.7	39.8	57.5	43.7	33.1	49.7	41.1		39.6			30.9			24.9			19.4			14.8		70	
75	61.5	48	39.1	54.3	42.3	32.4	47.5	40.6		38.2			29.7			24.1			18.8			14.5		75	
80	57.6	46.4	38.5	51.3	40.9	31.7	45.3	39.6		36.9			28.6			23.2			18.2			14		80	
85	54.5	45.1	37.9	48.3	39.6	31.2	43.2	38.7	30.8	35.7	28.4		27.6			22.3			17.6			13.5		85	
90	51.7	43.9	37.3	45.9	38.3	30.7	41	37.8	30.3	34.6	27.7		26.7			21.5			17			13		90	
95	49	42.8	37	43.7	37.2	30.2	38.9	36.5	29.7	33.4	27		25.8	19.9		20.8			16.3			12.5		95	
100	46.4	41.7	36.7	41.5	36.1	29.7	37	35	29.2	32.1	26.3	21	24.9	19.7		20			15.7			12		100	
105	43.9	40.7	36.5	39.5	35.2	29.2	35.2	33.7	28.7	30.7	25.7	21	24.1	19.2		19.3			15.1			11.6		105	
110	41.6	39.7	36.2	37.6	34.4	29	33.6	32.4	28.3	29.5	25.1	20.7	23.3	18.7		18.6	14		14.6			11.2		110	
115	39.4	38.7	36	35.7	33.6	28.8	32.1	31.1	27.9	28.3	24.6	20.4	22.5	18.2		18	13.7		14			10.8		115	
120	37.4	37.4	35.8	34	32.9	28.6	30.6	29.9	27.5	27.1	24	20.1	21.9	17.7	14.3	17.4	13.4		13.5	9.9		10.4		120	
125	35.9	35.9	35.5	32.3	32.1	28.4	29.1	28.8	27.1	25.9	23.5	19.8	21.2	17.3	14.3	16.8	13		13	9.9		10		125	
130	34.5	34.5	34.2	30.7	30.6	28.2	27.8	27.5	26.9	24.8	23.1	19.5	20.6	16.8	14	16.2	12.6		12.5	9.6		9.6		130	
135	33.1	33.1	32.8	29.1	29.1	28	26.5	26.3	26.3	23.6	22.6	19.2	20	16.4	13.8	15.7	12.3		12.1	9.3		9.3		135	
140	31.7	31.8	31.4	27.7	27.9	27.6	25.2	25.1	25.4	22.5	21.9	19	19.4	16	13.6	15.2	12	9.7	11.7	9.1		8.9		140	
145	30.4	30.5	30.1	26.7	26.8	26.8	23.9	24	24.4	21.5	21.2	18.9	18.7	15.7	13.4	14.8	11.7	9.7	11.3	8.8		8.6		145	
150	29.2	29.3	28.8	25.7	25.7	25.7	22.7	22.9	23.3	20.5	20.4	18.8	17.9	15.4	13.2	14.4	11.4	9.6	11	8.6		8.3		150	
155	28	28.1		24.7	24.7	24.7	21.8	21.9	22.3	19.5	19.7	18.6	17.2	15.1	13	14	11.1	9.4	10.7	8.3		8		155	
160	26.7	26.9		23.8	23.7	23.7	21	21	21.3	18.5	18.9	18.4	16.3	14.8	12.8	13.6	10.8	9.3	10.4	8.1	6.4	7.7		160	
165	25.3	25.6		22.9	22.8	22.8	20.2	20.2	20.4	17.6	18.1	18.1	15.5	14.6	12.6	13.2	10.6	9.1	10.1	7.9	6.4	7.5		165	
170	23.9	24.1		22	21.9	21.8	19.5	19.4	19.5	16.6	17.3	17.5	14.7	14.3	12.6	12.8	10.4	9	9.8	7.7	6.3	7.2		170	
175				21.1	21		18.7	18.7	18.8	16	16.4	16.8	13.9	14.1	12.5	12.4	10.2	8.9	9.5	7.5	6.2	7		175	
180				20.3	20.1		18	18	18	15.4	15.7	16.2	13.3	13.7	12.4	12.1	10.1	8.8	9.2	7.3	6.1	6.7		180	
185				19.5	19.3		17.3	17.3	17.3	14.9	15.1	15.5	12.9	13.3	12.4	11.7	9.9	8.7	9	7.2	6	6.5		185	
190				18.7	18.4		16.6	16.6	16.5	14.3	14.6	14.9	12.4	12.8	12.3	11.1	9.7	8.7	8.7	7	5.9	6.3		190	
195				17.8			15.9	16	15.8	13.8	14	14.3	11.9	12.2	12.2	10.5	9.6	8.6	8.5	6.9	5.8	6		195	
200							15.3	15.4		13.3	13.5	13.7	11.5	11.7	12	10.1	9.4	8.6	8.2	6.8	5.7	5.8		200	
205							14.6	14.8		12.8	12.9	13.1	11	11.2	11.6	9.7	9.2	8.5	8	6.6	5.7	5.6		205	
210							14	14.1		12.3	12.4	12.5	10.6	10.8	11.2	9.3	9.1	8.4	7.7	6.5	5.6	5.4		210	
215							10.8	11		11.8	11.9	12	10.2	10.4	10.7	9	9	8.3	7.5	6.4	5.6	5.2		215	
220										11.4	11.4		9.8	10	10.3	8.6	8.9	8.3	7.2	6.2	5.5	5		220	
225										10.9	10.9		9.4	9.6	9.9	8.3	8.6	8.3	6.9	6.1	5.5	4.8		225	
230										10.5			9	9.2	9.4	7.9	8.2	8.3	6.5	6	5.4	4.6		230	
235										10			8.6	8.8	9	7.6	7.9	8.2	6.2	5.9	5.3	4.4		235	
240													8.3	8.5		7.3	7.5	7.9	5.8	5.8	5.3	4.1		240	
245													7.9	8.1		7	7.2	7.5	5.5	5.8	5.2	3.8		245	
250													7.6	7.7		6.7	6.8	7.1	5.2	5.7	5.2			250	
255													7.2	7.4		6.4	6.5	6.8	4.9	5.4	5.2			255	
260																6.1	6.2	6.4	4.5	5.1	5.2			260	
265																5.8	5.8		4.2	4.7	5.1			265	
270																5.5	5.5		3.9	4.4	4.9			270	
275																5.2	5.3		3.6	4.1	4.5			275	
280																	4.9		3.3	3.7	4.1			280	
285																			3	3.4				285	
290																			2.8	3.1				290	
295																			2.5	2.8				295	

* adapter / pièce d'adaptateur

TAB 146444 / 146450 / 146456

Lifting capacities on the lattice fly jib Forces de levage à la fléchette treillis fixe

ft	169 ft + 8 ft*																								ft
	23 ft			46 ft			69 ft			92 ft			115 ft			138 ft			161 ft			184 ft			
	0°	20°	40°	0°	20°	40°	0°	20°	40°	0°	20°	40°	0°	20°	40°	0°	20°	40°	0°	20°	40°	0°			
38	88.5																							38	
40	88																								40
45	84	61			69.5																				45
50	80.5	58.8	43.1	67					53.8																50
55	76.5	56.4	42.7	64.5	47.7				52.9																55
60	72.5	54.3	41.8	61	47.4				51.2																60
65	68.5	52.4	40.9	58.2	45.6				49.2																65
70	65	50.7	40.2	55.7	44	32.9	47.3																		70
75	61	49.1	39.6	53.2	42.6	32.5	45.5	38.8																	75
80	57.6	47.6	39	50.8	41.3	31.9	43.7	38.6																	80
85	54.2	46.1	38.4	48.3	40	31.4	41.9	37.8																	85
90	51.3	44.8	37.9	46	38.9	30.9	40.2	36.9	30.3	33.3	26.7														90
95	48.6	43.6	37.4	43.7	37.8	30.4	38.5	35.8	30	32.3	26.3														95
100	46	42.7	37	41.5	36.8	30	36.8	34.5	29.6	31.3	25.8														100
105	43.5	41.7	36.8	39.4	35.8	29.6	35.2	33.3	29.3	30.1	25.2														105
110	41.2	40.8	36.6	37.4	35	29.2	33.7	32.1	29	29	24.7	20.3													110
115	39	39.1	36.5	35.5	34.3	28.9	32.3	31	28.7	28	24.2	20.1	21.9	17.8											115
120	36.8	37	36.2	33.7	33.6	28.7	30.8	30	28.4	26.9	23.7	19.9	21.3	17.4											120
125	34.6	35	35.7	32	32.8	28.5	29.3	29	27.8	25.9	23.2	19.6	20.7	17											125
130	32.5	33	33.8	30.3	31.2	28.4	28	27.9	27	24.9	22.8	19.4	20.1	16.6	13.8										130
135	30.8	31.3	31.9	28.7	29.7	28.2	26.6	26.8	26.2	23.8	22.3	19.1	19.6	16.2	13.6	15.3	12								135
140	29.3	29.7	30.1	27.1	28.1	27.9	25.3	25.7	25.5	22.7	21.7	18.9	19.1	15.9	13.4	14.9	11.7								140
145	27.9	28.2	28.4	25.6	26.7	27.3	24	24.7	24.7	21.6	21.1	18.7	18.6	15.5	13.2	14.5	11.5								145
150	26.5	26.8	26.9	24.5	25.3	25.9	22.8	23.7	23.7	20.6	20.4	18.6	18	15.1	13	14.1	11.2	9.4							150
155	25.2	25.4	25.4	23.4	24.1	24.6	21.6	22.6	22.8	19.6	19.8	18.5	17.4	14.9	12.9	13.8	11	9.3	10.4	8.2					155
160	24.2	24.3	24	22.2	23	23.5	20.4	21.4	22	18.6	19.1	18.4	16.7	14.7	12.7	13.4	10.7	9.2	10.1	8					160
165	23.2	23.4		21.2	21.9	22.3	19.3	20.3	21.1	17.6	18.5	18.2	15.9	14.4	12.5	13.1	10.5	9.1	9.9	7.8					165
170	22.3	22.5		20.1	20.8	21.1	18.6	19.2	20.3	16.6	17.7	17.7	15.1	14.2	12.5	12.7	10.3	8.9	9.6	7.6	6.2				170
175	21.3	21.6		19.1	19.7	19.9	17.8	18.4	19.4	15.7	17	17.2	14.4	14	12.4	12.4	10.2	8.8	9.4	7.4	6.1	6.6			175
180	20.5	20.7		18.1	18.7	18.7	17	17.5	18.4	14.9	16.3	16.6	13.6	13.8	12.4	12.1	10	8.7	9.1	7.2	6	6.4			180
185	19.6			17.2	17.6		16.3	16.8	17.5	14.3	15.6	16	12.9	13.5	12.3	11.8	9.9	8.6	8.9	7.1	5.9	6.2			185
190	18.8			16.4	16.6		15.5	16	16.6	13.8	14.8	15.3	12.1	13	12.3	11.5	9.7	8.5	8.7	7	5.8	6			190
195				15.7	15.9		14.7	15.2	15.7	13.2	14.1	14.8	11.4	12.6	12.2	11	9.6	8.5	8.5	6.8	5.7	5.8			195
200				15	15.3		14	14.4	14.8	12.6	13.5	14.2	10.9	12.1	12.1	10.4	9.4	8.5	8.3	6.7	5.6	5.6			200
205				14.4			13.3	13.6	13.9	12	12.9	13.5	10.4	11.6	11.9	9.8	9.3	8.4	8.1	6.6	5.6	5.4			205
210							12.6	12.9		11.5	12.3	12.8	10	11.2	11.6	9.3	9.2	8.4	7.9	6.5	5.5	5.3			210
215							12	12.1		10.9	11.7	12.2	9.6	10.7	11.2	8.9	9	8.4	7.5	6.3	5.5	5.1			215
220							11.5	11.4		10.4	11.1	11.5	9.2	10.2	10.8	8.5	8.9	8.3	7.1	6.2	5.5	4.9			220
225							11			9.8	10.5	10.8	8.8	9.7	10.3	8.1	8.7	8.3	6.7	6.1	5.4	4.7			225
230										9.3	10		8.4	9.2	9.8	7.7	8.5	8.2	6.2	6	5.4	4.5			230
235										8.8	9.3		7.9	8.8	9.2	7.3	8.2	8.2	5.8	5.9	5.4	4.2			235
240										8.3	8.8		7.5	8.3	8.7	6.9	7.8	8.1	5.4	5.8	5.3	3.8			240
245										7.9	8.2		7.1	7.9	8.2	6.4	7.4	8	5	5.7	5.2				245
250													6.7	7.4		6	7	7.6	4.6	5.6	5.2				250
255														6.2	6.9		5.6	6.6	7.2	4.2	5.6	5.2			255
260														5.9	6.4		5.2	6.1	6.7	3.9	5.2	5.2			260
265														5.6	6		4.7	5.7	6.3	3.5	4.8	5.2			265
270														5.3			4.3	5.2	5.7		4.4	5.1			270
275														5			3.9	4.8	5.1		4	4.8			275
280																	3.5	4.3			3.6	4.3			280
285																	3.1	3.8				3.8			285
290																	2.8	3.2							290
295																	2.5	2.7							295

* adapter / pièce d'adaptateur

Lifting capacities on the lattice fly jib

Forces de levage à la fléchette treillis fixe

186 - 197 ft

23 - 184 ft

264600 lbs

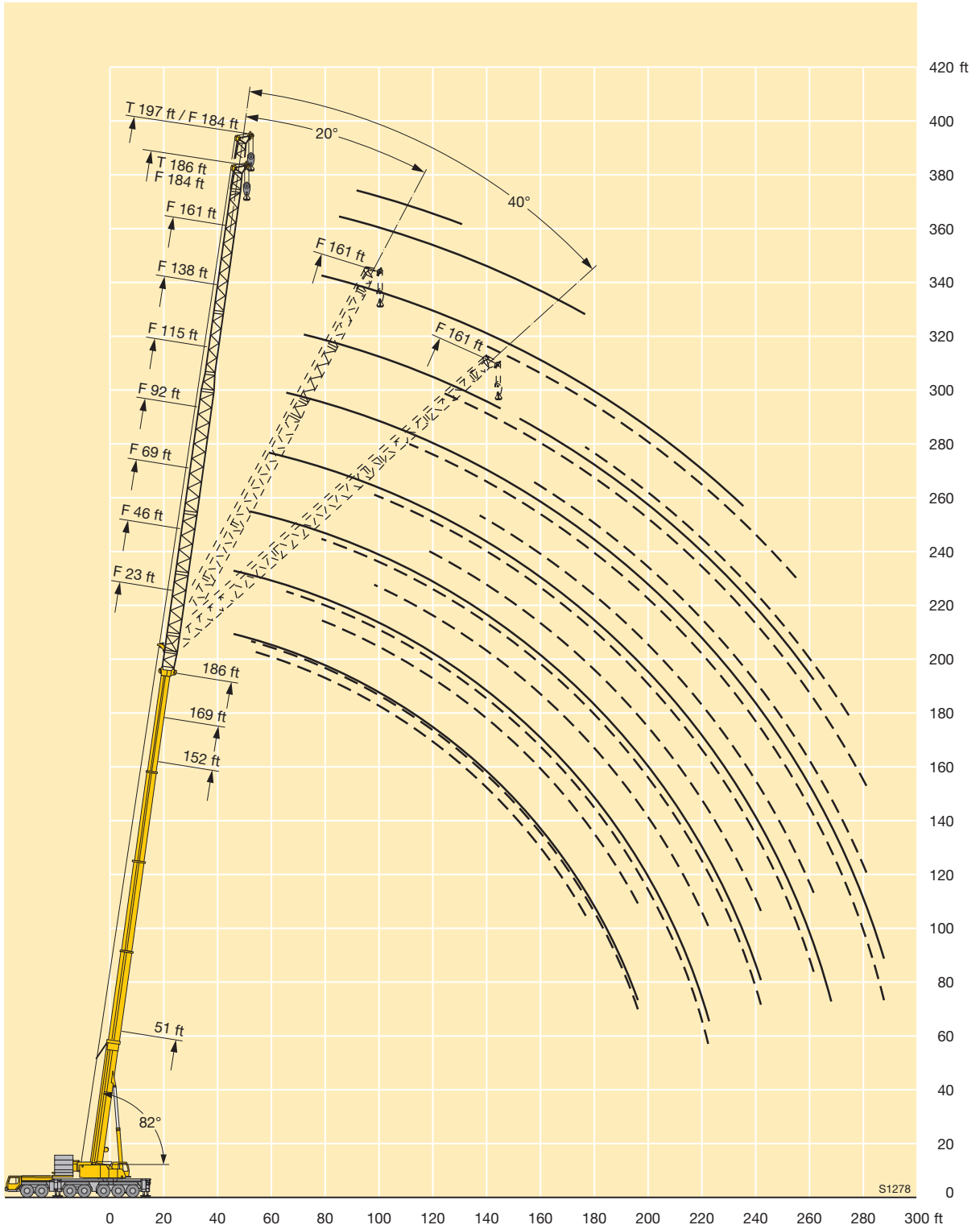
85%

ft	186 ft + 8 ft*																				197 + 8 ft*		ft				
	23 ft			46 ft			69 ft			92 ft			115 ft			138 ft			161 ft			184 ft		184 ft			
	0°	20°	40°	0°	20°	40°	0°	20°	40°	0°	20°	40°	0°	20°	40°	0°	20°	40°	0°	20°	40°	0°		0°			
45	71			56.2																					45		
50	69	58.7	42.9	55																					50		
55	66	57.6	42.5	53.4									34.5												55		
60	62.5	55.5	41.6	51.7									34.3												60		
65	59.6	53.5	40.9	49.7	44.3								33.2												65		
70	56.9	51.8	40.2	47.6	43.1								32.2						20						70		
75	54.3	50.3	39.6	45.7	41.8	31.8	37.9	33.4					31.2						19.8			15			75		
80	51.6	48.9	39.1	43.9	40.5	31.6	36.5	33.1					30						19.3			14.9			80		
85	49.1	47.5	38.6	42.2	39.4	31.1	35.1	32					28.9						18.9			14.5		10.7	85		
90	46.7	45.8	38.1	40.5	38.3	30.7	33.8	31					27.9						18.3			14.1		10.5	9.2	90	
95	44.3	43.8	37.6	38.8	37	30.3	32.5	29.9	26.2	27	23.3		22.4						17.7			13.6		10.2	9	95	
100	42	41.8	37.2	37.1	35.7	29.9	31.3	29	26	26	23.1		21.6						17.2			13.2		9.9	8.7	100	
105	39.9	40	36.7	35.5	34.3	29.6	30.1	28.1	25.2	25	22.3		20.8						16.7			12.8		9.5	8.2	105	
110	37.9	38.3	36.6	34	33.1	29.3	29	27.2	24.6	24.1	21.6		20	17.1					16.2			12.4		9.2	7.9	110	
115	35.9	36.4	36.1	32.5	31.9	28.9	28	26.4	24	23.2	20.9	18.5	19.3	16.8					15.8			12.1		8.9	7.5	115	
120	34.1	34.6	35	31.1	30.7	28.6	26.9	25.5	23.3	22.3	20.3	18.3	18.6	16.4					15.3	11.9		11.7		8.6	7.2	120	
125	32.3	32.9	33.2	29.6	29.4	28.3	26	24.6	22.8	21.5	19.6	17.8	17.9	15.8					14.9	11.9		11.4		8.3	6.8	125	
130	30.5	31.2	31.5	28.1	28.2	28.2	25	23.8	22.2	20.7	19	17.3	17.2	15.3					14.3	11.6		11.1		8	6.5	130	
135	28.9	29.6	29.9	26.7	27.1	27.3	24	23	21.7	19.9	18.4	16.9	16.6	14.8	13.1	13.8	11.4		13.8	11.4		10.8	8.4	7.7	6.2	135	
140	27.4	28	28.4	25.4	26	26.2	22.9	22.3	21.2	19.2	17.9	16.5	16	14.3	12.9	13.2	11.1		13.2	11.1		10.5	8.3	7.5		140	
145	26.2	26.5	26.9	24.1	24.8	25.2	21.8	21.5	20.7	18.5	17.3	16	15.4	13.8	12.6	12.7	10.9		12.7	10.9		10.2	8.1	7.2		145	
150	25	25.4	25.6	22.8	23.6	24.2	20.7	20.8	20.3	17.8	16.8	15.6	14.9	13.4	12.3	12.3	10.7		12.3	10.7		9.9	7.9	7		150	
155	23.8	24.3	24.4	21.6	22.4	23	19.7	20.2	19.8	17.2	16.4	15.2	14.4	13	12	11.9	10.5	8.9	10.5	8.9	9.5	7.7		6.8		155	
160	22.7	23.1	23.1	20.6	21.2	21.8	18.7	19.5	19.3	16.5	15.9	14.9	13.9	12.6	11.7	11.5	10.3	8.9	10.3	8.9	9.2	7.6		6.5		160	
165	21.5	21.9	21.9	19.7	20.1	20.7	17.7	18.7	18.7	15.9	15.4	14.5	13.4	12.2	11.4	11.1	10	8.8	10	8.8	8.8	7.4		6.2		165	
170	20.4	20.8	20.7	18.9	19.1	19.7	16.7	17.9	18.1	15.1	14.9	14.2	12.9	11.9	11.1	10.7	9.7	8.7	9.7	8.7	8.4	7.2		5.9		170	
175	19.3	19.7	19.5	18.1	18.2	18.8	16	16.9	17.4	14.3	14.4	13.9	12.4	11.6	10.8	10.3	9.4	8.6	10.3	9.4	8.6	8.1	7	5.8	5.6		175
180	18.3	18.7		17.3	17.2	17.8	15.4	16	16.7	13.5	13.9	13.6	12	11.3	10.6	10	9.1	8.4	10	9.1	8.4	7.7	6.9	5.8	5.3		180
185	17.3	17.7		16.5	16.4	16.9	14.7	15.2	16.1	12.8	13.5	13.3	11.5	11	10.4	9.6	8.9	8.2	9.6	8.9	8.2	7.4	6.7	5.7	5		185
190	16.3	16.7		15.7	15.6	16	14.1	14.6	15.5	12	13	13.1	11.1	10.8	10.2	9.3	8.7	8	10.2	9.3	8.7	8	7.1	6.6	5.6	4.7	190
195	15.3	15.7		15	14.7	15	13.5	13.9	14.7	11.5	12.5	12.7	10.7	10.5	10	9	8.4	7.8	10	9	8.4	7.8	6.8	6.4	5.5		195
200				14.2	13.9		12.9	13.3	14	11.1	12.1	12.3	10.2	10.2	9.8	8.7	8.2	7.6	10.2	9.3	8.7	8	7.1	6.6	5.6		200
205				13.4	13.2		12.4	12.7	13.3	10.6	11.7	12	9.7	9.9	9.6	8.3	7.9	7.5	10.2	9.3	8.7	8	7.1	6.6	5.6		205
210				12.7	12.5		11.8	12.1	12.6	10.2	11.1	11.6	9.2	9.5	9.4	8	7.7	7.3	10.2	9.3	8.7	8	7.1	6.6	5.6		210
215				12	11.8		11.2	11.6	11.9	9.7	10.6	11.2	8.8	9.2	9.2	7.6	7.5	7.1	10.2	9.3	8.7	8	7.1	6.6	5.6		215
220				11.3	11.1		10.6	11	11.3	9.3	10.1	10.7	8.4	9	9	7.2	7.3	7	10.2	9.3	8.7	8	7.1	6.6	5.6		220
225							10	10.4		8.9	9.7	10.1	8	8.7	8.9	6.8	7.1	6.8	10.2	9.3	8.7	8	7.1	6.6	5.6		225
230							9.5	9.8		8.5	9.2	9.6	7.6	8.4	8.7	6.3	6.9	6.7	10.2	9.3	8.7	8	7.1	6.6	5.6		230
235							8.9	9.2		8.1	8.7	9	7.3	8	8.5	5.9	6.6	6.5	10.2	9.3	8.7	8	7.1	6.6	5.6		235
240							8.4	8.6		7.6	8.3	8.5	6.8	7.6	8.1	5.5	6.4	6.4	10.2	9.3	8.7	8	7.1	6.6	5.6		240
245										7.2	7.8		6.4	7.2	7.7	5.1	6.2	6.2	10.2	9.3	8.7	8	7.1	6.6	5.6		245
250										6.8	7.3		6	6.8	7.2	4.8	6	6.2	10.2	9.3	8.7	8	7.1	6.6	5.6		250
255										6.4	6.8		5.6	6.4	6.7	4.4	5.6	6.1	10.2	9.3	8.7	8	7.1	6.6	5.6		255
260										5.9	6.4		5.1	5.9	6.2	4	5.1	5.9	10.2	9.3	8.7	8	7.1	6.6	5.6		260
265										5.5			4.7	5.4		3.6	4.7	5.5	10.2	9.3	8.7	8	7.1	6.6	5.6		265
270													4.2	5					10.2	9.3	8.7	8	7.1	6.6	5.6		270
275													3.8	4.5					10.2	9.3	8.7	8	7.1	6.6	5.6		275
280													3.4	4					10.2	9.3	8.7	8	7.1	6.6	5.6		280
285													3	3.5					10.2	9.3	8.7	8	7.1	6.6	5.6		285

* adapter / pièce d'adaptateur

TAB 146444 / 146450 / 146456

Hubhöhen Lifting heights



Lifting capacities on the lattice fly jib with guyed telescopic boom Forces de levage à la fléchette treillis fixe avec flèche télescopique haubanée



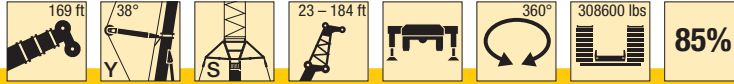
ft	152 ft + 8 ft*																					ft	
	23 ft			46 ft			69 ft			92 ft			115 ft			138 ft			161 ft				184 ft
	0°	20°	40°	0°	20°	40°	0°	20°	40°	0°	20°	40°	0°	20°	40°	0°	20°	40°	0°	20°	40°	0°	
38	119			99																		38	
40	117			98.5																			40
45	109	62.5		92			75			56.6													45
50	102	60		87			72.5			54.6			42.1										50
55	96	57.7	42.8	82	51.4		69.5			52.2			41.3			31.7							55
60	90	55.4	41.9	77.5	49.3		66.5			50.1			39.6			31.5							60
65	85	53.3	41	73	47.4	34.4	63	47.1		48.2			38.1			30.3			24.7				65
70	80	51.4	40.3	68.5	45.7	33.7	59.5	45.9		46.4			36.6			29.1			23.8			18.7	70
75	74.5	49.6	39.6	64.5	44.1	33	56.2	44.7		44.7	32.1		35.2			28			22.9			18.3	75
80	69.5	48	38.9	61	42.6	32.3	53.2	43.4	32.5	43.1	31.8		33.9			26.9			22			17.6	80
85	65.5	46.6	38.3	57.6	41.2	31.7	50.5	42.2	31.8	41.5	30.9		32.7			25.8			21.2			16.8	85
90	62	45.3	37.7	54.4	39.9	31.2	48	40.9	31.1	39.9	30		31.5	23.2		24.9			20.4			16.2	90
95	58.5	44.1	37.3	51.3	38.7	30.6	45.7	39.7	30.5	38.4	29.1	22.8	30.5	22.7		24			19.6			15.5	95
100	55.2	42.9	37	48.4	37.5	30.1	43.3	38.5	29.9	36.8	28.3	22.7	29.4	22		23.2	16.7		18.9			14.8	100
105	52	41.8	36.6	45.7	36.6	29.7	40.9	37.4	29.4	35.5	27.6	22.3	28.1	21.3		22.4	16.7		18.2			14.2	105
110	49	40.8	36.3	43	35.6	29.4	38.6	36.3	28.9	34.1	26.9	21.9	27	20.7		21.6	16.1		17.6			13.7	110
115	46.5	39.7	36.1	40.8	34.8	29.1	36.6	35.2	28.4	32.5	26.2	21.5	26	20.2	15.7	20.8	15.6		16.9	11.9		13.1	115
120	44.4	39	35.8	38.9	33.9	28.8	34.8	34	28	30.9	25.5	21.1	25.1	19.6	15.6	19.9	15.1		16.3	11.8		12.6	120
125	42.3	38.6	35.5	37	33.1	28.5	33.1	32.4	27.6	29.3	24.9	20.8	24.3	19	15.2	19.1	14.6		15.7	11.4		12.1	125
130	40.4	38.2	35.5	35.3	32.3	28.3	31.5	31	27.3	27.9	24.4	20.5	23.5	18.5	14.9	18.2	14.2		15	11		11.6	130
135	38.5	37.9	35.5	33.6	31.6	28	30	29.6	27	26.5	23.9	20.1	22.7	18	14.6	17.6	13.7		14.3	10.6		11.1	135
140	36.6	37.1	35.5	31.9	31	27.8	28.5	28.3	26.8	25.1	23.5	19.9	22	17.5	14.4	17	13.3	10.5	13.7	10.3		10.7	140
145	34.9	35.7	35.2	30.3	30.6	27.6	27	27	26.5	23.8	23	19.7	21.3	17.1	14.1	16.4	12.9	10.4	13.3	10		10.3	145
150	33.4	34.3	33.7	28.8	29.4	27.6	25.6	25.7	25.7	22.5	22.6	19.5	20.6	16.7	13.9	15.9	12.5	10.2	12.9	9.7		9.9	150
155	32	32.8	32.3	27.6	28.2	27.5	24.5	24.5	24.6	21.5	21.8	19.3	19.7	16.4	13.7	15.4	12.1	10	12.5	9.4		9.5	155
160	30.8	31.5		26.6	27.1	26.9	23.4	23.5	23.5	20.5	20.9	19.1	18.7	16	13.4	14.9	11.8	9.9	12.1	9.1	7.1	9.2	160
165				25.5	26	25.8	22.4	22.5	22.5	19.6	19.9	19	17.7	15.7	13.2	14.4	11.6	9.7	11.7	8.9	7	8.9	165
170				24.6	25	24.8	21.5	21.6	21.7	18.7	19	18.8	16.7	15.4	13.1	13.9	11.4	9.5	11.3	8.6	6.9	8.6	170
175				23.6	24	23.8	20.5	20.8	20.8	17.8	18.1	18.5	15.7	15.1	13	13.5	11.1	9.4	10.9	8.4	6.8	8.2	175
180				22.7	23		19.6	19.9	20	17	17.3	17.9	15	14.8	12.9	13	10.9	9.3	10.6	8.2	6.6	8	180
185				21.8			18.7	19.1	19.2	16.2	16.6	17.2	14.5	14.5	12.8	12.6	10.7	9.2	10.3	8	6.5	7.7	185
190				20.9			18	18.3	18.5	15.5	16	16.5	13.9	14.2	12.6	12.1	10.5	9	9.9	7.8	6.3	7.4	190
195							17.2	17.5	17.7	15	15.4	15.8	13.4	13.6	12.5	11.4	10.3	8.9	9.6	7.6	6.3	7.1	195
200							16.6	16.8		14.4	14.8	15.1	12.9	13.1	12.4	10.9	10.1	8.8	9.3	7.5	6.2	6.9	200
205							16	16.1		13.9	14.2	14.5	12.4	12.6	12.3	10.5	9.9	8.7	9	7.3	6.1	6.6	205
210										13.3	13.6	13.9	11.9	12.1	12.3	10.1	9.7	8.6	8.7	7.1	6	6.3	210
215										12.8	13.1	13.3	11.5	11.6	11.8	9.7	9.6	8.5	8.4	7	5.9	6.1	215
220										12.3	12.5		11	11.2	11.3	9.4	9.5	8.4	8.1	6.8	5.8	5.8	220
225										11.9	12		10.6	10.8	10.8	9	9.4	8.4	7.9	6.7	5.7	5.6	225
230										11.3			10.1	10.3	10.4	8.7	9.1	8.4	7.5	6.5	5.6	5.4	230
235										10.9			9.7	9.9	9.9	8.3	8.7	8.4	7.1	6.3	5.5	5.2	235
240													9.3	9.5	9.5	8	8.3	8.4	6.8	6.2	5.4	4.9	240
245													8.9	9		7.6	7.9	8.2	6.4	6.2	5.4	4.6	245
250													8.5	8.6		7.3	7.6	7.8	6.1	6.1	5.4	4.3	250
255													8.1	8.3		7	7.2	7.4	5.7	6	5.4	3.9	255
260																6.7	6.9	7	5.4	5.8	5.4	3.6	260
265																6.4	6.5		5.1	5.5	5.4		265
270																6.1	6.2		4.7	5.1	5.3		270
275																5.8	5.9		4.4	4.8	5.2		275
280																5.5			4.1	4.4	4.8		280
285																			3.8	4.1			285
290																			3.5	3.8			290
295																			3.2	3.4			295
300																			2.8	3.1			300

* adapter / pièce d'adaptateur

TAB 146462 / 146472 / 146482



Lifting capacities on the lattice fly jib with guyed telescopic boom Forces de levage à la fléchette treillis fixe avec flèche télescopique haubanée



ft	169 ft + 8 ft*																								ft		
	23 ft			46 ft			69 ft			92 ft			115 ft			138 ft			161 ft			184 ft					
	0°	20°	40°	0°	20°	40°	0°	20°	40°	0°	20°	40°	0°	20°	40°	0°	20°	40°	0°	20°	40°	0°					
38	113			94.5																			38				
40	112			94																			40				
45	104	63		88			72.5																45				
50	97	61		82.5			70			52.4				40.6									50				
55	90.5	58.6	43.2	77.5	51.5		66.5			51.5				39.9				30.6					55				
60	85	56.4	42.3	72.5	49.6		62.5			49.7				38.4				30.4					60				
65	80	54.5	41.4	68.5	47.8	34.4	59.3	46.7		47.9				37				29.3			23.8		65				
70	75	52.7	40.7	64.5	46.2	33.8	56.1	45.6		46.2				35.7				28.3			23.1		70				
75	71	51	40.1	61	44.7	33.2	53.2	44.4		44.6	31.8			34.5				27.3			22.2		75				
80	66.5	49.4	39.4	57.7	43.3	32.5	50.5	43.3		43.2	31.6			33.3				26.4			21.4		80				
85	62.5	47.9	38.8	54.5	41.9	32	47.9	42.2	31.7	41.8	30.7			32.1				25.5			20.7		85				
90	58.9	46.5	38.3	51.5	40.7	31.5	45.5	41.1	31.1	40	29.9			31.1				24.7			19.9		90				
95	55.7	45.3	37.8	48.9	39.5	31	43.2	39.9	30.5	38.1	29.1			30.1	22.2			23.8			19.2		95				
100	52.8	44.2	37.3	46.5	38.4	30.5	41	38.8	30	36.3	28.3	22.2		29.2	22			23.1			18.5		100				
105	50	43.1	37	44.1	37.3	30	38.8	37.7	29.5	34.5	27.6	22.2		28.2	21.3			22.4			17.9		105				
110	47.5	42.2	36.8	41.9	36.5	29.6	37.1	36.4	29.1	32.8	26.9	21.8		27.3	20.7			21.7	15.9		17.3		110				
115	45.1	41.2	36.5	39.7	35.6	29.3	35.4	34.8	28.6	31.4	26.3	21.5		26.3	20.2			21	15.5		16.7		115				
120	42.7	40.3	36.3	37.7	34.9	29	33.7	33	28.2	30	25.7	21.1		25.3	19.6	15.2		20.3	15		16.1	11.4	120				
125	40.4	39.4	36.1	35.7	34.1	28.8	32.1	31.5	27.8	28.7	25.1	20.8		24.4	19.1	15.2		19.5	14.6		15.6	11.3	125				
130	38.2	38.1	35.8	33.8	33.4	28.5	30.5	30.1	27.4	27.5	24.5	20.5		23.7	18.6	14.9		18.7	14.1		15.1	10.9	130				
135	36.6	36.7	35.6	32	32.1	28.3	29	28.7	27.2	26.2	24	20.2		22.8	18.2	14.6		18	13.8		14.5	10.6	135				
140	35.3	35.3	34.9	30.3	30.6	28.1	27.5	27.4	26.7	24.9	23.5	19.9		21.8	17.7	14.4		17.4	13.4	10.4	13.9	10.3	140				
145	33.9	33.9	33.6	28.7	29.1	27.8	26.1	26.1	26.1	23.7	23.1	19.7		20.9	17.3	14.2		16.9	13	10.4	13.3	10	10.2	145			
150	32.7	32.6	32.3	27.6	27.6	27.5	24.7	24.9	24.9	22.5	22.2	19.5		19.9	16.8	13.9		16.4	12.6	10.2	12.9	9.7		9.8	150		
155	31.5	31.3	31	26.6	26.6	26.5	23.4	23.7	23.8	21.3	21.3	19.4		19	16.5	13.7		15.9	12.3	10	12.5	9.4		9.4	155		
160	30.3	30.1	29.8	25.6	25.6	25.5	22.2	22.6	22.7	20.2	20.3	19.2		18	16.2	13.5		15.4	12	9.9	12.2	9.2		9.1	160		
165	29.1	28.9	28.6	24.6	24.7	24.6	21.1	21.4	21.7	19.1	19.3	19.1		17.1	15.9	13.3		15	11.6	9.7	11.8	8.9		8.8	165		
170	28	27.8	27.4	23.7	23.8	23.6	20.3	20.4	20.7	18	18.4	19		16.2	15.6	13.2		14.6	11.4	9.6	11.5	8.7	6.9		8.5	170	
175	26.9	26.7		22.8	22.9	22.7	19.6	19.5	19.8	17	17.5	18.2		15.4	15.3	13.1		14	11.2	9.4	11.1	8.4	6.7		8.2	175	
180	25.8	25.6		21.9	22	21.8	18.9	18.8	19	16.2	16.7	17.4		14.5	15	13		13.4	11	9.3	10.8	8.2	6.6		7.9	180	
185				21	21.2	21	18.2	18.1	18.2	15.6	15.8	16.6		13.7	14.6	12.9		12.7	10.8	9.2	10.5	8	6.5		7.7	185	
190				20.2	20.4	20.1	17.5	17.4	17.5	15	15	15.8		12.9	14	12.8		12.1	10.6	9.1	10.2	7.9	6.4		7.4	190	
195				19.4	19.6		16.9	16.8	16.8	14.5	14.4	15.1		12.1	13.3	12.6		11.5	10.5	9	9.8	7.7	6.3		7.2	195	
200				18.5	18.9		16.2	16.1	16.1	13.9	13.8	14.5		11.5	12.6	12.5		10.9	10.3	8.9	9.4	7.5	6.2		6.9	200	
205							15.6	15.5	15.5	13.4	13.3	13.9		11.1	11.9	12.3		10.3	10.1	8.8	8.9	7.4	6.1		6.6	205	
210							15	14.9		12.9	12.7	13.3		10.7	11.4	11.9		9.7	9.9	8.7	8.3	7.2	6		6.4	210	
215							14.4	14.3		12.4	12.2	12.7		10.3	11	11.4		9.3	9.8	8.6	7.9	7.1	5.9		6.1	215	
220							13.9	13.7		11.9	11.7	12.2		10	10.5	10.9		8.9	9.5	8.5	7.4	6.9	5.8		5.7	220	
225							13.3			11.4	11.3	11.7		9.6	10.1	10.4		8.6	9.1	8.4	6.9	6.8	5.7		5.3	225	
230										11	10.8			9.2	9.7	9.9		8.2	8.6	8.3	6.5	6.6	5.6		4.8	230	
235										10.5	10.4			8.9	9.3	9.5		7.9	8.2	8.3	6.1	6.5	5.6		4.4	235	
240										10.1	9.9			8.5	8.8	9		7.5	7.8	8.2	5.7	6.4	5.5		4.1	240	
245										9.7	9.5			8.2	8.4	8.6		7.2	7.4	7.9	5.4	6.2	5.4			245	
250														7.9	8.1	8.2		6.9	7	7.5	5	5.9	5.3			250	
255															7.6	7.7	7.8		6.5	6.7	7.1	4.7	5.5	5.3			255
260															7.2	7.4			6.2	6.4	6.7	4.4	5.1	5.3			260
265															6.9	7			5.9	6.1	6.3	4	4.7	5.3			265
270															6.6				5.5	5.7	6	3.7	4.4	5.1			270
275															6.3				5.2	5.4	5.6	3.4	4.1	4.7			275
280																			4.9	5.1		3.1	3.8	4.3			280
285																			4.6	4.7			3.4	3.9			285
290																			4.2	4.4				3.5			290
295																			3.9	4.1				3.2			295

* adapter / pièce d'adaptateur

TAB 146462 / 146472 / 146482



Lifting capacities on the lattice fly jib with guyed telescopic boom Forces de levage à la fléchette treillis fixe avec flèche télescopique haubanée

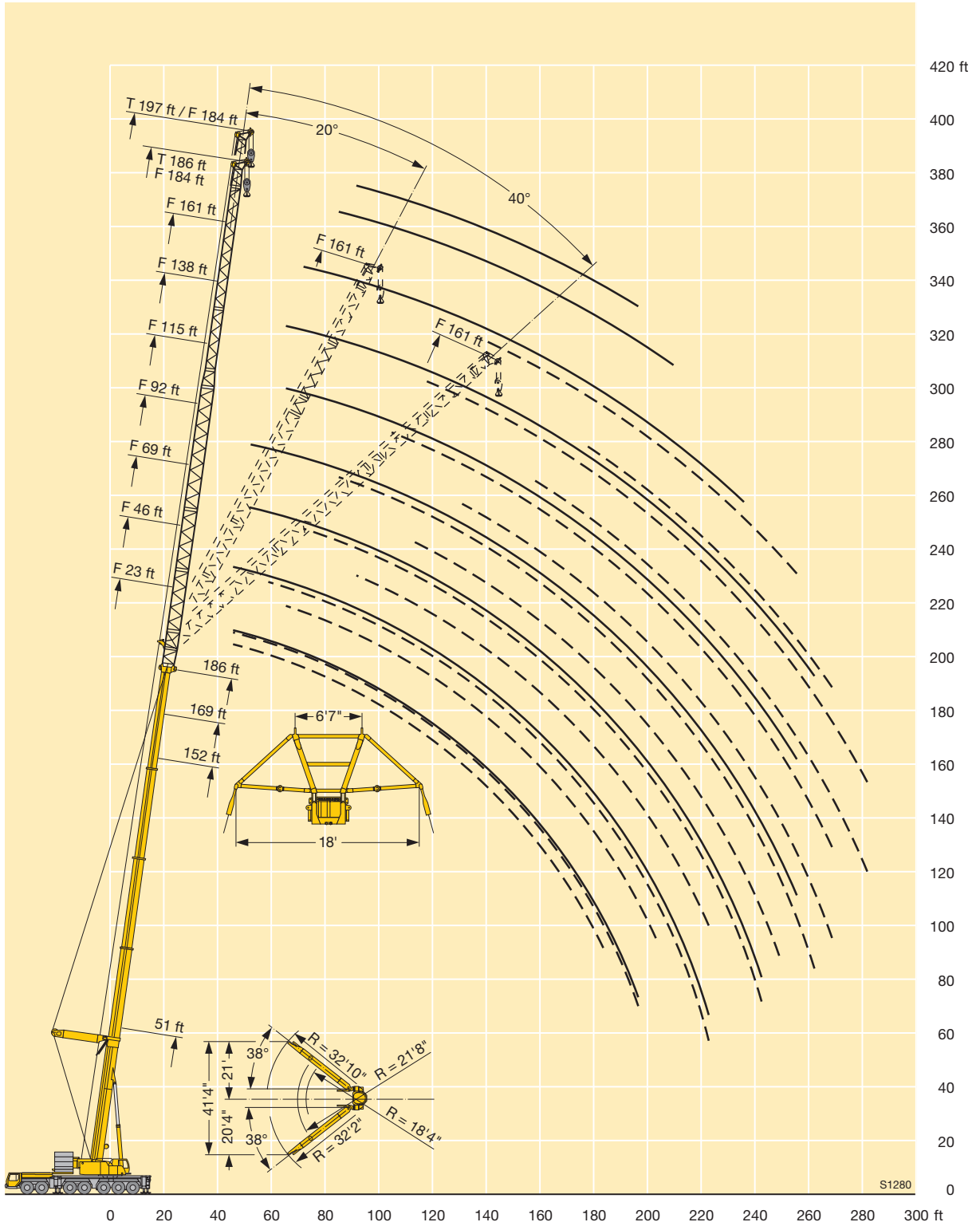


ft	186 ft + 8 ft*																				197 + 8 ft*			
	23 ft			46 ft			69 ft			92 ft			115 ft			138 ft			161 ft			184 ft	184 ft	
	0°	20°	40°	0°	20°	40°	0°	20°	40°	0°	20°	40°	0°	20°	40°	0°	20°	40°	0°	20°	40°	0°	0°	
38	100																							38
40	99																							40
45	92.5	63		76.5			64.5																	45
50	87	61		73			61.5			49.5														50
55	81.5	58.9	43.3	69	49.5		58.2			48.7			36.7											55
60	76.5	56.8	42.5	65	49.2		55.2			47			36.4											60
65	72	54.9	41.7	61.5	47.5	34.4	52.4			45.1			35.2			28.4								65
70	68	53.2	41	58.1	46	33.8	49.7	44.2		43			34.1			27.6			21.6					70
75	64	51.6	40.4	55	44.6	33.2	47.1	43.6		41			33			26.7			21.2					75
80	60.5	50.1	39.8	52.1	43.2	32.6	44.7	42.5		38.9			32			25.9			20.5					80
85	57.2	48.7	39.2	49.4	42	32	42.5	41.3		37	30.1		30.9			25.1			19.8			15.4		85
90	54	47.3	38.7	46.8	40.9	31.5	40.5	39.8	30.6	35.3	29.4		30			24.3			19.1			14.9	14	90
95	51.2	46.1	38.2	44.4	39.8	31.1	38.5	38.1	30.3	33.7	28.7		28.9			23.5			18.5			14.4	13.7	95
100	48.6	44.9	37.7	42.1	38.7	30.6	36.6	36.4	29.8	32.1	28		27.6	21.1		22.8			17.8			13.9	13.2	100
105	46.1	43.9	37.2	40.2	37.8	30.2	34.7	34.8	29.3	30.6	27.3		26.4	21.1		22.1			17.2			13.3	12.7	105
110	43.7	42.7	37	38.4	36.8	29.8	33	33.2	28.9	29.2	26.7	21.5	25.2	20.5		21.5			16.7			12.9	12.2	110
115	41.4	40.9	36.7	36.6	35.4	29.5	31.5	31.6	28.5	27.8	26.1	21.3	24	19.9		20.8	15.1		16.2			12.4	11.8	115
120	39.2	38.9	36.5	34.8	33.8	29.1	30.1	30	28.2	26.4	25.5	21	22.9	19.4		20.2	14.9		15.6			11.9	11.4	120
125	37.2	36.9	36.2	33.1	32.2	28.8	28.8	28.5	27.8	25.2	25	20.6	21.8	19		19.5	14.4		15.2			11.5	11	125
130	35.1	35.1	35	31.4	30.7	28.6	27.5	27.2	27	24.1	24.1	20.4	20.8	18.5	14.7	18.6	14.1		14.7			11.1	10.6	130
135	33.2	33.3	33.4	29.8	29.3	28.4	26.2	26	25.8	23.1	23	20.1	19.8	18.1	14.5	17.7	13.7		14.2	10.4		10.7	10.2	135
140	31.5	31.6	31.8	28.2	28	27.8	24.8	24.8	24.7	22.1	21.9	19.9	18.8	17.6	14.3	16.9	13.3		13.8	10.3		10.3	9.9	140
145	30.3	29.9	30.2	26.7	26.6	26.5	23.6	23.7	23.6	21.1	20.7	19.6	18	17.2	14.1	16.1	13		13.3	10		9.9	9.5	145
150	29	28.8	29	25.3	25.4	25.3	22.3	22.6	22.5	20.1	19.8	19.4	17.2	16.8	13.9	15.4	12.7		12.7	9.7		9.6	9.1	150
155	27.9	27.7	27.8	23.8	24.1	24.1	21.2	21.5	21.5	19	18.9	19.2	16.4	16.4	13.7	14.7	12.3	9.9	12.2	9.5		9.2	8.7	155
160	26.8	26.6	26.6	22.7	22.9	23	20	20.5	20.6	18.1	18	18.6	15.7	16.1	13.5	14	12	9.8	11.7	9.2		8.9	8.4	160
165	25.7	25.5	25.5	21.8	21.8	21.9	18.9	19.5	19.6	17.1	17.2	17.8	14.9	15.7	13.3	13.4	11.7	9.7	11.1	9		8.5	8	165
170	24.6	24.5	24.4	21	20.8	21	17.8	18.6	18.7	16.2	16.3	17	14.2	15.1	13.1	12.7	11.4	9.5	10.6	8.7		8.3	7.6	170
175	23.5	23.5	23.3	20.2	19.9	20.1	17.1	17.6	17.8	15.3	15.6	16.3	13.6	14.4	13	12.1	11.2	9.4	10	8.5	6.7	7.9	7.2	175
180	22.5	22.5	22.3	19.4	19	19.3	16.4	16.7	17	14.5	14.8	15.5	12.9	13.7	12.9	11.6	11	9.3	9.5	8.3	6.6	7.4	6.7	180
185	21.6	21.6		18.6	18.2	18.5	15.8	15.9	16.2	13.6	14	14.8	12.2	13.1	12.8	11	10.8	9.2	9	8	6.5	7	6.2	185
190	20.6	20.6		17.9	17.4	17.6	15.2	15.3	15.5	12.8	13.3	14.1	11.5	12.5	12.8	10.4	10.7	9.1	8.5	7.8	6.3	6.5	5.8	190
195	19.7	19.8		17.2	16.6	16.9	14.6	14.7	14.9	12.3	12.5	13.4	10.9	11.9	12.3	9.9	10.5	9	8	7.7	6.2	6.1	5.3	195
200				16.5	15.9	16.1	14	14.1	14.3	11.8	12	12.7	10.2	11.3	11.7	9.3	10.2	8.9	7.5	7.5	6.1	5.6	4.9	200
205				15.8	15.3		13.4	13.6	13.7	11.4	11.5	12.1	9.6	10.8	11.2	8.8	9.7	8.9	7.1	7.4	6	5.2		205
210				15.1	14.6		12.9	13.1	13.1	10.9	11.1	11.6	9.2	10.2	10.7	8.3	9.3	8.8	6.6	7.3	6	4.8		210
215				14.5	14		12.4	12.5	12.5	10.5	10.6	11.1	8.9	9.7	10.2	7.8	8.8	8.7	6.2	7.1	5.9	4.4		215
220				13.8	13.5		11.8	12	12	10.1	10.2	10.6	8.5	9.2	9.7	7.3	8.4	8.6	5.7	6.9	5.8			220
225							11.3	11.5		9.7	9.8	10.2	8.1	8.8	9.2	6.9	7.9	8.4	5.3	6.5	5.7			225
230							10.8	11		9.3	9.4	9.7	7.7	8.4	8.7	6.5	7.4	8	4.9	6.1	5.6			230
235							10.3	10.6		8.9	9	9.3	7.3	8	8.3	6.1	7	7.6	4.5	5.7	5.6			235
240							9.9	10.1		8.5	8.6	8.8	7	7.6	7.9	5.7	6.6	7.2	4.1	5.3	5.5			240
245							8.2	8.2	8.4	6.6	6.6	6.7	5.5	6.2	6.5	5.3	6.2	6.8	4.9	5.4	5.4			245
250							7.8	7.8		6.2	6.2	6.3	5.1	5.8	6.1	5	5.8	6.4	4.5	5.4	5.4			250
255							7.4	7.4		5.8	5.8	5.9	4.6	5.4	5.6	4.6	5.4	6	4.1	5.1	5.1			255
260							7.1	7		5.5	5.5	5.6	4.3	5.1	5.3	4.3	5	5.6	3.8	4.7	4.7			260
265							6.7			5.1	5.1	5.2	3.9	4.6	4.8	3.9	4.6	5.1		4.3	4.3			265
270										4.8	4.8	4.9	3.6	4.2	4.4	3.6	4.2	4.7		3.9	3.9			270
275										4.4	4.4	4.5	3.2	3.9	4.1	3.2	3.9	4.3		3.5	3.5			275
280										4.1	4.1	4.2		3.5	3.6	3.5	3.9							280
285										3.8	3.8	3.9	2.8	3.4	3.5	3.2	3.5							285

* adapter / pièce d'adaptateur

TAB 146462 / 146472 / 146482

Lifting heights Hauteurs de levage



Lifting capacities on the luffing lattice jib Forces de levage à la flèche treillis relevable



ft	51 ft + 13 ft*											84 ft + 13 ft*											ft		
	46	69	92	115	138	161	184	207	230	253	276	46	69	92	115	138	161	184	207	230	253	276			
22	262																						22		
24	262																							24	
26	262																							26	
28	262																							28	
30	262											214												30	
32	262	220										214												32	
34	260	219										214												34	
36	256	217										214												36	
38	253	215	170									214	157											38	
40	247	212	169									214	157											40	
45	223	204	166	133								212	157	127										45	
50		195	163	132								194	157	127										50	
55		181	160	130	106								157	127	103									55	
60		165	157	128	104	87							156	127	102	83								60	
65		151	150	126	103	86							145	127	102	82.5	68							65	
70		139	139	125	102	85	69						134	126	101	82	68							70	
75			129	122	100	84	68.5	57.7						121	101	81.5	67.5	55.3						75	
80			120	118	99.5	83	68	57.5						113	101	81.5	67	55.2						80	
85			112	110	98.5	82	67	56.9	46.8					106	101	81	67	54.9	45.9					85	
90			104	103	98	81	66.5	56.3	46.3	39.1				100	96	80.5	66.5	54.6	45.6	37.3				90	
95				97	95	80.5	66	55.8	45.9	38.7	31.4			94	91	80.5	66.5	54.3	45.4	37.1	31			95	
100				91.5	90	80	65.5	55.3	45.4	37.9	31.3				86	80	66	54	45.1	36.8	30.9	24.7		100	
105				86	85	79.5	64.5	54.8	45	37.1	30.9				82	79	66	53.8	44.9	36.6	30.7	24.7		105	
110				81.5	80.5	78.5	64	54.4	44.5	36.4	30.5				77.5	75	66	53.6	44.7	36.4	30.6	24.5		110	
115				71	76	75.5	64	53.9	44.1	35.6	30.1				73.5	71.5	66	53.4	44.5	36.2	30.4	24.3		115	
120					72.5	71.5	63.5	53.4	43.8	34.9	29.6					68.5	65	53.3	44.3	36	30.2	24.1		120	
125					68.5	68	63	52.9	43.4	34.2	29.1					65.5	63	53.3	44.2	35.9	30	24		125	
130					65.5	65	62	52.1	43.1	33.6	28.6					62.5	60	53.2	44.1	35.7	29.8	23.8		130	
135					60.5	62	60	51.3	42.8	32.9	28.1					59.5	57.8	52.9	44.1	35.5	29.5	23.6		135	
140						59	57.7	50.6	42.7	32.3	27.7					56.8	55.5	52.2	44.1	35.4	29.2	23.5		140	
145						56.4	55.1	49.8	42.6	31.7	27.2						53.3	51.2	44.1	35.3	28.8	23.3		145	
150						54	52.7	49.1	42.5	31.2	26.8						51	49.4	44.1	35.3	28.5	23.2		150	
155						51	50.5	48.4	42.3	30.6	26.4						48.9	47.6	44.1	35.3	28.1	23.1		155	
160						45.2	48.4	47.3	42	30.1	26						46.9	45.8	43.5	35.3	27.8	23		160	
165							46.4	45.8	41.6	29.6	25.6							44	42.3	35.3	27.5	22.8		165	
170							44.6	43.9	41.2	29.1	25.3							42.2	40.8	35.3	27.2	22.8		170	
175							42.7	42.2	40.4	28.6	25							40.6	39.4	35.3	26.9	22.8		175	
180							39.7	40.5	39.2	28.2	24.7							39	37.9	35.2	26.6	22.7		180	
185								39	37.7	27.8	24.4								37.5	36.5	34.6	26.3	22.5		185
190									37.5	36.2	27.4	24.1							36.1	35.1	33.4	26	22.4		190
195									36.1	34.8	27.1	23.8								33.8	32.3	25.7	22.2		195
200										33.9	33.5	26.7	23.5							32.5	31.1	25.5	22.1		200
205											32.3	26.5	23.2							31.3	29.9	25.2	21.9		205
210											31.1	26.2	23								28.8	25	21.7		210
215											29.9	26	22.7								27.7	24.8	21.6		215
220											28.2	25.8	22.5								26.7	24.7	21.4		220
225											25.7	25.6	22.3								25.7	24.4	21.3		225
230												25.4	22.1								24.8	23.8	21.2		230
235												24.9	22								23.9	22.9	21.1		235
240												23.5	21.8									22.1	20.9		240
245												21.7	21.6									21.3	20.4		245
250													21.1									20.5	19.6		250
255																						19.8	18.8		255
260																							18.1		260
265																							17.4		265
270																							16.8		270
275																							16.1		275
280																							15.3		280

* adapter / pièce d'adaptateur

TAB 146494

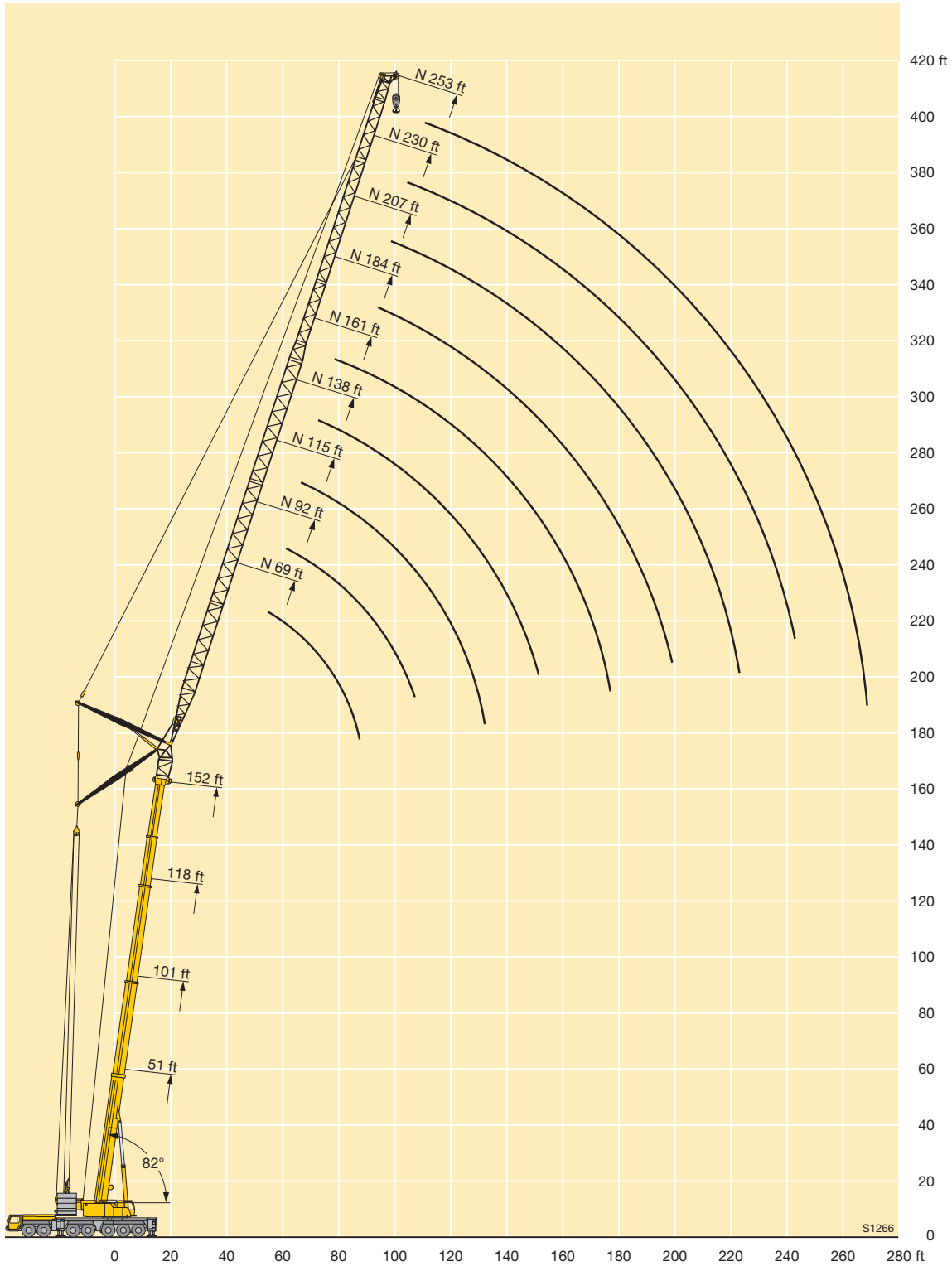
Lifting capacities on the luffing lattice jib Forces de levage à la fléchette treillis relevable



ft	118 ft + 13 ft*										152 ft + 13 ft*										186 ft + 13 ft*						ft
	69	92	115	138	161	184	207	230	253	276	69	92	115	138	161	184	207	230	253	69	92	115	138	161	184		
45	106																								45		
50	106																								50		
55	106	86	69							66.5															55		
60	105	85.5	69							66.5	52.5									39					60		
65	103	85	69	56						66	52.5	42.2							38.8	29.4					65		
70	100	84.5	68.5	55.8	46.1					65	52.4	42.1	33.8						38.7	29.3					70		
75		98	83.5	68.5	55.6	46				64	52.2	41.9	33.7	27					38.6	29.2	22.7				75		
80			82	68	55.4	45.9				63	51.9	41.7	33.5	27					38.4	29	22.5	17.2			80		
85			80.5	68	55.2	45.7	37.2			62	51.4	41.6	33.4	26.9					38.2	28.9	22.4	17.1	12.1		85		
90			79	67.5	55	45.5	37	30.5			50.8	41.4	33.3	26.8	21.1				37.8	28.8	22.3	17	12.1		90		
95			78	66.5	54.9	45.3	36.9	30.4	24.5		50.2	41.2	33.2	26.7	21.1	15			28.7	22.2	16.9	12.1	6.8		95		
100			77	65.5	54.8	45.2	36.8	30.3	24.4	18.9	49.6	40.8	33.1	26.7	21.1	15	9.5		28.6	22	16.8	12.1	6.8		100		
105				64.5	54.8	45	36.6	30.2	24.3	18.9		40.5	32.9	26.6	21	15	9.5		28.5	21.9	16.7	12.1	6.8		105		
110				63.5	54.4	44.9	36.5	30.1	24.2	18.9	12.9	40.1	32.7	26.5	20.9	15	9.5	5.3	28.4	21.8	16.6	12.1	6.8		110		
115				63	53.8	44.8	36.4	30	24	18.9	12.9	39.8	32.5	26.4	20.9	15	9.5	5.3		21.8	16.5	12.1	6.8		115		
120				63	53.1	44.8	36.3	29.9	23.9	18.8	12.9	39.4	32.3	26.3	20.8	15	9.5	5.3		21.7	16.4	12.1	6.8		120		
125					52.4	44.7	36.2	29.8	23.8	18.7	12.9	39	32.1	26.2	20.7	15	9.5	5.3		21.6	16.4	12.1	6.8		125		
130					52	44.6	36.2	29.6	23.7	18.6	12.9	38.5	31.9	26.1	20.7	15	9.5	5.3		21.6	16.3	12.1	6.8		130		
135					51.7	44.1	36.1	29.6	23.6	18.5	12.8		31.7	25.9	20.6	15	9.5	5.3		21.5	16.2	12.1	6.8		135		
140					51.4	43.7	36.1	29.5	23.5	18.4	12.8		31.4	25.7	20.6	15	9.5	5.3			16.2	12.1	6.8		140		
145					50.8	43.2	36	29.5	23.4	18.3	12.8		31.1	25.6	20.5	15	9.5	5.3			16.1	12.1	6.8		145		
150					49	43.1	35.9	29.5	23.4	18.2	12.7		30.8	25.4	20.4	15	9.5	5.3			16.1	12.1	6.8		150		
155						43	35.7	29.5	23.4	18.2	12.7			25.3	20.3	15	9.5	5.3			16.1	12.1	6.8		155		
160						42.7	35.4	29.5	23.4	18.2	12.6			25.1	20.2	15	9.5	5.3				12.1	6.8		160		
165						42	35.1	29.5	23.4	18.2	12.6			25	20.1	15	9.5	5.3				12	6.8		165		
170						40.6	35.1	29.5	23.4	18.2	12.6			24.8	20.1	15	9.5	5.3				12	6.8		170		
175							35.1	29.5	23.4	18.2	12.6			24.7	20	15	9.5	5.3				12	6.8		175		
180							35	29.5	23.4	18.2	12.6				19.9	15	9.5	5.3					6.8		180		
185							34.5	29.4	23.4	18.2	12.6				19.8	15	9.5	5.3					6.8		185		
190							33.4	29.4	23.4	18.2	12.6				19.7	15	9.5	5.3					6.8		190		
195								29.4	23.4	18.2	12.6				19.6	15	9.5	5.3					6.8		195		
200									29.4	23.4	18.2	12.6				15	9.5	5.3					6.8		200		
205									29.1	23.4	18.2	12.6					15	9.5	5.3						205		
210									28.2	23.4	18.2	12.6						15	9.5	5.3					210		
215									27.3	23.4	18.2	12.6							15	9.5	5.3				215		
220										23.4	18.2	12.6								15	9.5	5.3			220		
225										23.3	18.2	12.6									9.5	5.3			225		
230										23	18.2	12.6										9.5	5.3		230		
235										22.2	18.2	12.6										9.5	5.3		235		
240											18.2	12.6										9.5	5.3		240		
245												18.2	12.6										5.3		245		
250												18.2	12.6										5.3		250		
255													18.1	12.6									5.3		255		
260													17.5	12.6									5.3		260		
265														12.6										5.3	265		
270														12.6											270		
275														12.6											275		
280														12.6											280		

* adapter / pièce d'adaptateur

Lifting heights Hauteurs de levage



Lifting capacities on the luffing lattice jib Forces de levage à la fléchette treillis relevable



ft	51 ft + 13 ft*											84 ft + 13 ft*											ft	
	46	69	92	115	138	161	184	207	230	253	276	46	69	92	115	138	161	184	207	230	253	276		
38	217																						38	
40	217																							40
45	213	185																						45
50	197	184										174												50
55		176	151									166	149											55
60		160	150									151	147											60
65		146	144	121								138	135											65
70		135	134	119								125	116											70
75		125	124	117	96							117	112	96										75
80			115	114	95.5							109	105	95.5										80
85			108	106	94	78.5						101	98	94										85
90			101	99.5	93	78							92.5	89	77									90
95			94.5	93.5	90.5	77	63						87.5	84	76.5	63								95
100				87.5	86.5	76	63						82.5	79.5	75.5	63								100
105				82.5	81.5	75.5	62						78	75	72.5	63								105
110				78	77	74.5	61.5	52					73.5	71.5	69	62.5	51.2							110
115				74	73	72	61	51.6	42.1					68	65.5	62	51	42.3						115
120				70.5	69.5	68.5	60.5	51.2	41.9					65	62.5	60	50.8	42.2						120
125				66	65	59.8	50.7	41.5						62	59.8	57.5	50.6	42						125
130				62.5	62	59.6	50.3	41.2	34.1					58.9	57.3	55	50.4	41.8	34					130
135				59.8	59.1	57.6	49.9	40.8	33.6	27.6				54.9	52.7	49.9	41.7	33.9	28.1					135
140				57.1	56.4	55	49.5	40.5	33	27.5				52.5	50.5	48.7	41.6	33.8	28					140
145					53.8	52.5	49.3	40.2	32.4	27.3				50.2	48.5	46.7	41.4	33.7	28					145
150					51.5	50.2	49.1	39.9	31.8	27.1				48	46.6	44.8	41.3	33.5	27.9	22.1				150
155					49.4	48	47.4	39.6	31.3	26.8				45.9	44.8	43.1	40.7	33.4	27.9	22.1				155
160					47.3	46	45.3	39.5	30.7	26.5				43	41.4	39.6	33.3	27.9	22					160
165					45.4	44.1	43.4	39.4	30.2	26.1					41.2	39.9	38	33.2	27.8	22				165
170					43.6	42.3	41.6	39.4	29.7	25.8					39.6	38.5	36.6	33.1	27.7	22				170
175						40.7	40	38.4	29.2	25.4					38	37	35.3	32.8	27.4	22				175
180						39.1	38.4	37	28.8	25.1						35.5	34	31.9	27.1	22				180
185						37.6	36.9	35.5	28.5	24.8						34.1	32.8	30.8	26.9	22				185
190						36.2	35.5	34.1	28.1	24.5						32.8	31.7	29.6	26.6	22				190
195							34.1	32.8	27.7	24.2						31.5	30.5	28.6	26.3	21.9				195
200							32.9	31.5	27.4	24						30.4	29.3	27.6	25.8	21.9				200
205							31.7	30.3	27	23.7							28.2	26.6	25.1	21.9				205
210							30.5	29.2	26.7	23.5								27.1	25.7	24.2	21.9			210
215							29.4	28.1	26.3	23.3								26.1	24.7	23.3	21.9			215
220								27.1	25.8	23.1								25.1	23.7	22.5	21.3			220
225								26.1	25.1	22.8									22.8	21.7	20.5			225
230								25.1	24.2	22.6									21.9	20.9	19.8			230
235								24.2	23.3	21.9									21.1	20.1	19			235
240									22.4	21.1									20.3	19.3	18.3			240
245									21.6	20.3											18.5	17.6		245
250									20.8	19.5											17.8	16.9		250
255									20	18.7											17.1	16.2		255
260									18.7	18											16.5	15.5		260
265										17.3											15.8	14.9		265
270										16.6												14.2		270
275										16												13.6		275
280										15.4												13.1		280
285																						12.5		285

* adapter / pièce d'adaptateur

TAB 146497

Lifting capacities on the luffing lattice jib Forces de levage à la flèche treillis relevable

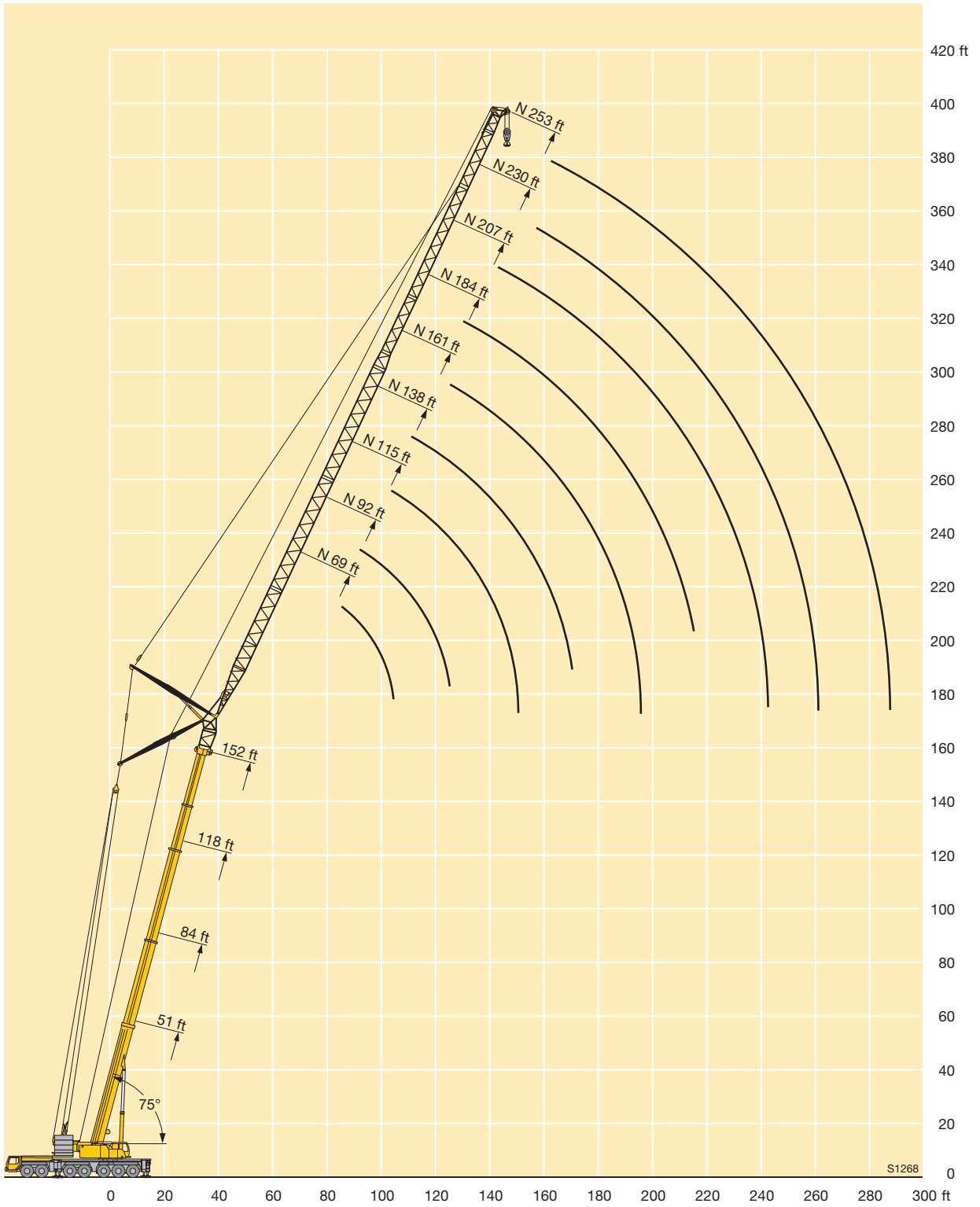


ft	118 ft + 13 ft*										152 ft + 13 ft*							186 ft + 13 ft*						ft			
	ft										ft							ft									
	69	92	115	138	161	184	207	230	253	276	69	92	115	138	161	184	207	230	253	69	92	115	138		161	184	
70	91																								70		
75	88.5	78																							75		
80	84.5	77																							80		
85	81	74.5								55.9															85		
90	78	72	63							54.1	47														90		
95	75	69.5	62	53.1						52.3	46.3										33				95		
100		67	60.5	52.9						50.6	45.1	37.8									32.7	26.5			100		
105		65	58.9	52							43.9	37.8									31.5	26.5			105		
110		63	57.4	51	43.6						42.7	36.9	31.1								30.4	25.8			110		
115		61	55.8	50	43.4	35.1					41.5	36.1	30.7									25.1	20.4		115		
120			54.3	48.9	42.9	35					40.3	35.3	30.1	25								24.4	20.2		120		
125			52.8	47.9	42.3	35						34.5	29.5	25								23.7	19.8		125		
130			51.4	46.7	41.6	34.9	28.6					33.6	28.8	24.6	19.8							22.9	19.3	15.3	130		
135			49.9	45.5	40.9	34.7	28.6					32.8	28.3	24.2	19.7							22.2	18.7	15	10.9	135	
140				44.4	40.1	34.4	28.5	22.6				32.1	27.7	23.7	19.4	14.3							18.2	14.6	10.9	140	
145				43.3	39.2	33.9	28.4	22.6				31.3	27	23.3	19.2	14.3							17.6	14.3	10.9	145	
150				42.3	38.4	33.4	28.3	22.6	18			30.8	26.4	22.9	18.8	14.3							17.1	13.9	10.9	6.1	150
155				40.9	37.6	32.9	28.2	22.6	18				25.9	22.5	18.5	14.3	9						16.6	13.5	10.9	6.1	155
160				39.4	36.8	32.3	28	22.6	18	12.1			25.3	22.1	18.2	14.3	9	4.9						13.1	10.8	6.1	160
165					35.9	31.7	27.6	22.6	18	12.1			24.8	21.6	17.8	14.3	9	4.9						12.7	10.5	6.1	165
170					34.8	31.1	27.3	22.6	18	12.1			24.4	21.2	17.5	14.3	9	4.9						12.4	10.3	6.1	170
175					33.6	30.5	26.9	22.5	18	12.1				20.8	17.2	14	9	4.9						12	10	6.1	175
180					32.4	29.9	26.5	22.4	18	12.1				20.5	16.9	13.8	9	4.9						11.7	9.8	6.1	180
185					29.2	26.1	22.1	18	12.1					20.2	16.6	13.5	9	4.9							9.6	6.1	185
190					28.2	25.7	21.8	18	12.1					19.9	16.3	13.3	9	4.9							9.3	6.1	190
195					27.2	25.3	21.5	18	12.1					19.8	16	13.1	9	4.9							9.1	6.1	195
200					26.3	24.9	21.2	18	12.1						15.7	12.9	9	4.9							8.9	6.1	200
205					25.5	24.3	20.8	17.9	12.1						15.5	12.6	9	4.9								6.1	205
210						23.5	20.5	17.6	12.1						15.3	12.4	9	4.9								6.1	210
215						22.7	20.2	17.3	12.1						15.2	12.2	9	4.9								6.1	215
220						21.9	19.8	17	12.1						12	9	4.9									6	220
225						21.2	19.3	16.8	12.1							11.8	9	4.9								5.8	225
230							18.6	16.5	12.1							11.7	9	4.9									230
235							18	16.2	12.1							11.7	9	4.9									235
240							17.3	15.9	12.1							11.6	8.9	4.9									240
245							16.7	15.4	12.1								8.8	4.9									245
250							16.2	14.8	12.1								8.7	4.9									250
255							15.6	14.2	12.1								8.7	4.9									255
260								13.7	11.9								8.6	4.9									260
265								13.2	11.5									4.9									265
270								12.7	11									4.9									270
275								12.2	10.5									4.9									275
280									10.1									4.9									280
285									9.6									4.9									285
290									9.2																		290
295									8.8																		295
300									8.5																		300

* adapter / pièce d'adaptateur

TAB 146497

Lifting heights Hauteurs de levage



Lifting capacities on the luffing lattice jib Forces de levage à la flèche treillis relevable



ft	51 ft + 13 ft*												84 ft + 13 ft*												ft					
	46	69	92	115	138	161	184	207	230	253	276	46	69	92	115	138	161	184	207	230	253	276								
50	179																						50							
55	171																							55						
60	156																							60						
65	143	140									129													65						
70		131									120													70						
75		121	120								111	103												75						
80		112	111									101												80						
85		105	104	102								94.5												85						
90			97	95.5								89	83.5											90						
95			91	89.5	84.5							83.5	80.5											95						
100			85.5	84.5	83								76.5	69.5										100						
105				79.5	78								72.5	69.5										105						
110				75	74	71							68.5	66										110						
115				71	70	68.5							65	62.5	58.4									115						
120				67.5	66.5	65.5	57.2							59.8	57.4									120						
125				64	63	62	57.1							57.1	54.7									125						
130				61	60	59.2	56.6							54.5	52.4	49.5								130						
135					57.2	56.4	54.8	47.2						52	50.1	47.9	44.9							135						
140					54.6	53.8	52.4	47.1						49.6	48.1	45.9	44.1							140						
145					52.2	51.4	50	46.8							46.1	44	42.2							145						
150					49.9	49.2	47.8	46.4	38						44.1	42.3	40.5	38.2						150						
155						47.1	45.7	44.9	37.9						42.2	40.6	38.9	37						155						
160						45.1	43.8	43	37.7	30.6					40.5	39.1	37.4	35.5	31.1					160						
165						43.3	41.9	41.2	37.6	30.5						37.6	35.9	34.1	31					165						
170						41.5	40.2	39.5	37.5	30.1							36.1	34.6	32.7	30.5				170						
175						39.9	38.6	37.8	36.3	29.6	24.8						34.6	33.3	31.5	29.4	25.9			175						
180							37.1	36.3	34.9	29.2	24.8						33.2	32.1	30.3	28.2	25.9			180						
185							35.6	34.9	33.5	28.8	24.8						31.9	30.9	29.2	27.1	25.6			185						
190							34.3	33.5	32.1	28.4	24.7						30.7	29.6	28.1	26.1	24.5			190						
195							33	32.2	30.8	28.1	24.4							28.5	27.1	25.1	23.6	20.4		195						
200								31	29.6	27.7	24.1							27.4	26.2	24.2	22.6	20.4		200						
205								29.8	28.5	27.2	23.9								26.3	25.2	23.3	21.8	20.2	205						
210								28.7	27.4	26.4	23.7										24.2	22.4	20.9	19.7	210					
215								27.7	26.3	25.3	23.4										23.2	21.6	20.1	18.9	215					
220								26.7	25.3	24.3	22.8										22.3	20.8	19.4	18.2	220					
225									24.4	23.4	22										21.5	20	18.6	17.4	225					
230									23.5	22.5	21.1										20.7	19.2	17.9	16.7	230					
235									22.6	21.6	20.3										19.9	18.4	17.3	16.1	235					
240									21.8	20.8	19.4											17.7	16.6	15.4	240					
245									20	18.6												17	15.9	14.8	245					
250										19.2	17.9												16.3	15.2	14.2	250				
255										18.5	17.2												15.7	14.6	13.6	255				
260										17.8	16.5													14	13	260				
265										17.2	15.8													13.4	12.4	265				
270											15.2														12.8	11.8	270			
275											14.6															12.3	11.4	275		
280											14																11.9	10.9	280	
285											13.4																	10.4	285	
290																												10	290	
295																													9.6	295
300																													9.2	300

* adapter / pièce d'adaptateur

TAB 146500

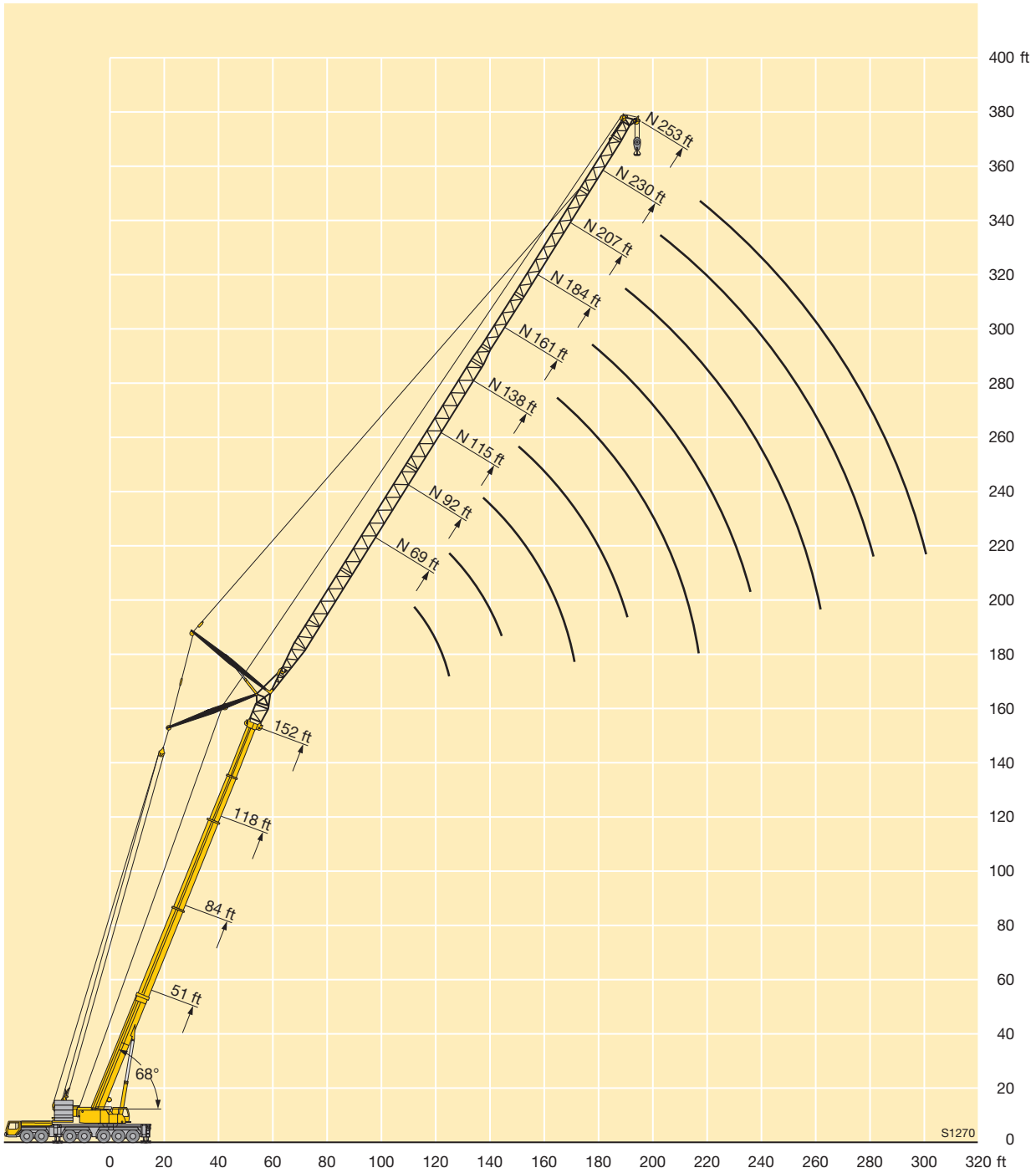
Lifting capacities on the luffing lattice jib Forces de levage à la fléchette treillis relevable



ft	118 ft + 13 ft*											152 ft + 13 ft*							186 ft + 13 ft*						ft
	ft											ft							ft						
	69	92	115	138	161	184	207	230	253	276	69	92	115	138	161	184	207	230	253	69	92	115	138	161	
95	68																								95
100	64.5	56																							100
105	61.5	56																							105
110	59	56								41.3															110
115		54.4	49.6							40.1															115
120		52.3	48.9							38.5	34.4														120
125		50.4	47.1								34.3														125
130		48.4	45.4	42.1							33														130
135			43.6	41							31.9	28													135
140			41.9	39.6	35.8						30.8	27.6													140
145			40.2	38.2	35.6							26.6													145
150			38.6	36.6	34.5							25.7	22.6												150
155			37.2	35.2	33.3	29.6						24.9	22												155
160				33.9	32	29.2						24.2	21.2	18.5											160
165				32.6	30.7	28.3						23.5	20.5	18.4											165
170				31.4	29.5	27.4	24.7					22.8	19.8	17.8											170
175				30.3	28.4	26.3	24.2						19.3	17.2	14.1										175
180					27.4	25.3	23.6	20					18.7	16.7	13.9										180
185					26.4	24.3	23	19.9					18.2	16.2	13.5										185
190					25.5	23.4	22.3	19.4					17.7	15.7	13	11									190
195					24.6	22.5	21.4	18.9	16.3					15.3	12.6	10.7									195
200					23.8	21.7	20.6	18.4	16					14.8	12.2	10.4	8.1								200
205						20.9	19.8	17.9	15.6	12.1				14.4	11.9	10.1	8								205
210						20.2	19.1	17.1	15.2	12.1				14	11.6	9.8	7.8								210
215						19.5	18.4	16.4	14.8	11.9				13.8	11.3	9.6	7.5	4.9							215
220						18.8	17.7	15.8	14.3	11.7					11	9.3	7.3	4.9							220
225							17	15.1	13.8	11.4					10.7	9	7	4.9							225
230							16.4	14.5	13.1	11.2					10.5	8.8	6.8	4.9							230
235							15.8	13.9	12.6	10.7					10.3	8.5	6.6	4.9							235
240							15.3	13.4	12	10.2						8.3	6.4	4.8							240
245							14.7	12.8	11.5	9.7						8.1	6.2	4.7							245
250								12.3	11	9.2						7.9	6	4.5							250
255								11.8	10.5	8.7						7.7	5.8	4.4							255
260								11.4	10	8.3						7.6	5.6	4.2							260
265								10.9	9.6	7.8							5.4	4							265
270									9.1	7.4							5.2	3.8							270
275									8.7	7							5	3.6							275
280									8.3	6.6							4.9	3.5							280
285									7.9	6.2								3.3							285
290									7.6	5.8								3.1							290
295									7.2	5.4								3							295
300										5.1								2.9							300
305										4.8															305
310										4.5															310

* adapter / pièce d'adaptateur

Lifting heights Hauteurs de levage





Lifting capacities on the luffing lattice jib with guyed telescopic boom

Forces de levage à la fléchette treillis relevable avec flèche télescopique haubanée

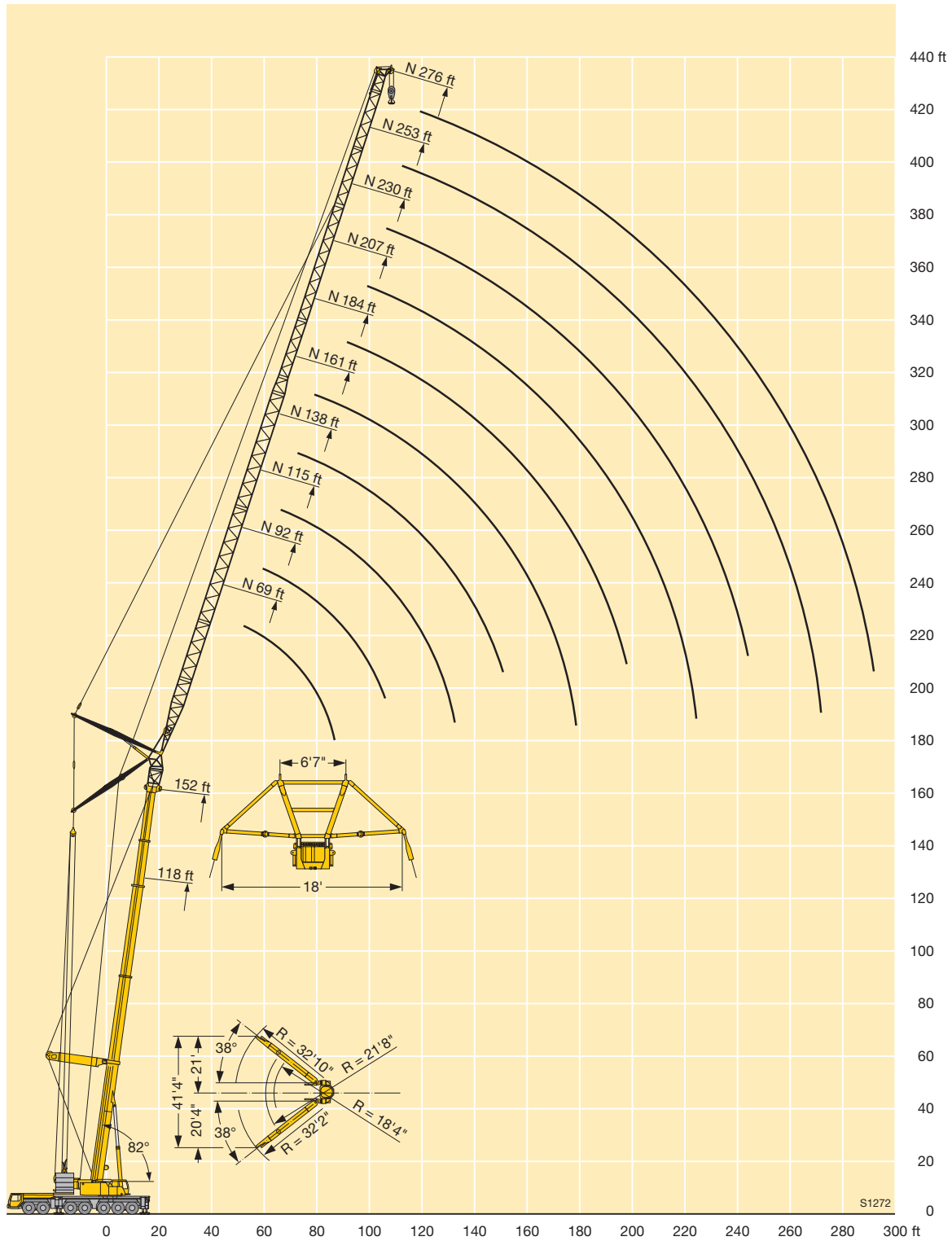


ft	118 + 13 ft*										152 ft + 13 ft*								186 ft + 13 ft*						ft						
	69	92	115	138	161	184	207	230	253	276	69	92	115	138	161	184	207	230	253	276	69	92	115	138		161	184	207			
45	154																										45				
50	147	129								113																		50			
55	139	127	105							110	96											84						55			
60	131	122	104							104	95											83.5						60			
65	123	117	104	82						99.5	91	81.5										79.5	72.5					65			
70	116	112	100	82	66.5					95.5	87	78.5	66.5									75.5	70	62.5				70			
75	109	107	97	82	66.5					92	83.5	76	66.5	55.8								72.5	67	61	53.6			75			
80		102	94	82	66.5					89	80.5	73	66	55.8								69.5	64	58.4	53.2			80			
85		97	91	81.5	66.5					87	77.5	70.5	64	55.8								67	61.5	56.1	51.2	46.1		85			
90		92	88.5	79	66.5	54.1					74.5	68	61.5	55.4								66	59	53.9	49.4	44.7		90			
95		87	85.5	77	66.5	54.1	44.5				72.5	66	59.6	54.3	43.7								56.9	51.9	47.6	43.3	34	95			
100		81.5	82	74.5	66	54.1	44.5	36			71	64	57.6	52.6	43.7	36.1							54.9	50	45.8	41.8	34	21.8	100		
105			78	72.5	65.5	54.1	44.5	36	30			62	55.8	51	43.7	36.1	28.2						53.4	48.3	44.2	40.4	34	21.8	105		
110			74.5	70.5	63.5	54.1	44.5	36	30			60	54.1	49.5	43.6	36.1	28.2						52.3	46.7	42.7	39	34	21.8	110		
115			70.5	68.5	62	54.1	44.5	36	30	23.5			59.1	52.5	48.1	42.8	36.1	28.2	22.6					45.2	41.3	37.7	33.3	21.8	115		
120			66.5	66	60.5	53.7	44.5	36	30	23.5			58.1	50.9	46.7	41.6	36.1	28.2	22.6	17.2				43.9	40	36.4	32.3	21.8	120		
125				63	59.1	52.5	44.5	36	30	23.5			57	49.5	45.4	40.4	36	28.2	22.6	17.2					43.1	38.7	35.3	31.2	21.8	125	
130				60.5	57.7	51.3	44.5	36	30	23.5			54.6	48.3	44.2	39.3	35	28.2	22.6	17.2					42.5	37.5	34.2	30.2	21.8	130	
135				58.2	55.7	50.2	44.4	36	30	23.5				47.7	43	38.3	34.1	28.2	22.6	17.2					42.1	36.4	33.1	29.2	21.8	135	
140				55.7	53.6	49.1	44	36	30	23.5				47.2	41.9	37.3	33.2	28.2	22.6	17.2					35.5	32.1	28.3	21.8	140		
145				52.8	51.6	48	43.2	36	30	23.5				46.7	40.8	36.3	32.4	28.1	22.6	17.2					35	31.1	27.5	21.8	145		
150				49	49.6	47	42.4	36	30	23.5				45.6	40.1	35.4	31.7	27.6	22.6	17.2					34.5	30.2	26.7	21.8	150		
155					47.9	45.8	41.6	35.7	29.9	23.5					39.8	34.5	31	27.1	22.6	17.2					34	29.5	25.9	21.8	155		
160					46	44.4	40.9	35.3	29.8	23.5					39.6	33.7	30.3	26.5	22.6	17.2						29	25.1	21.8	160		
165					44.2	42.8	40.1	34.8	29.5	23.5					39.3	33	29.6	26	22.5	17.2							28.6	24.4	21.7	165	
170					42.4	41.3	39.3	34.2	29.1	23.5					38.6	32.6	29	25.5	22	17.2							28.3	23.7	21.1	170	
175						39.8	38	33.7	28.7	23.5					36.9	32.5	28.3	25	21.6	17.2							28	23.3	20.5	175	
180						38.3	36.7	33.2	28.2	23.5						32.5	27.7	24.5	21.2	17.2								23	20	180	
185						36.8	35.5	32.8	27.9	23.5						32.3	27.3	24	20.8	17.1								22.7	19.4	185	
190						35.4	34.3	32.2	27.5	23.5						32	27.2	23.5	20.5	16.9								22.5	18.9	190	
195							33	31.1	27.1	23.4						31	27.2	23.1	20.1	16.6								22.3	18.6	195	
200							31.8	30.1	26.8	23.3							27.1	22.7	19.7	16.3								22.1	18.5	200	
205							30.6	29	26.5	23.1							27	22.5	19.4	16									18.3	205	
210							29.5	28	26.1	22.9							26.8	22.4	19.1	15.7									18.1	210	
215							28.4	27	25.8	22.7							26.1	22.4	18.7	15.4									18	215	
220								26	25.3	22.5							24.9	22.3	18.5	15.1									17.8	220	
225								25	24.5	22.2								22.3	18.4	14.8										225	
230								24.1	23.6	22								22	18.3	14.5										230	
235									23.2	22.7	21.3							21.4	18.3	14.2											235
240										21.9	20.5							20.5	18.3	14.1											240
245										21	19.7									18.2	14										245
250										20.3	19									18.1	14										250
255										19.5	18.2									17.6	14										255
260										18.8	17.5									16.9	14										260
265											16.8									16.1	13.9										265
270											16.2										13.9										270
275											15.5										13.8										275
280											14.9										13.3										280
285																					12.7										285

* adapter / pièce d'adaptateur

TAB 146503

Lifting heights Hauteurs de levage



Lifting capacities on the luffing lattice jib with guyed telescopic boom

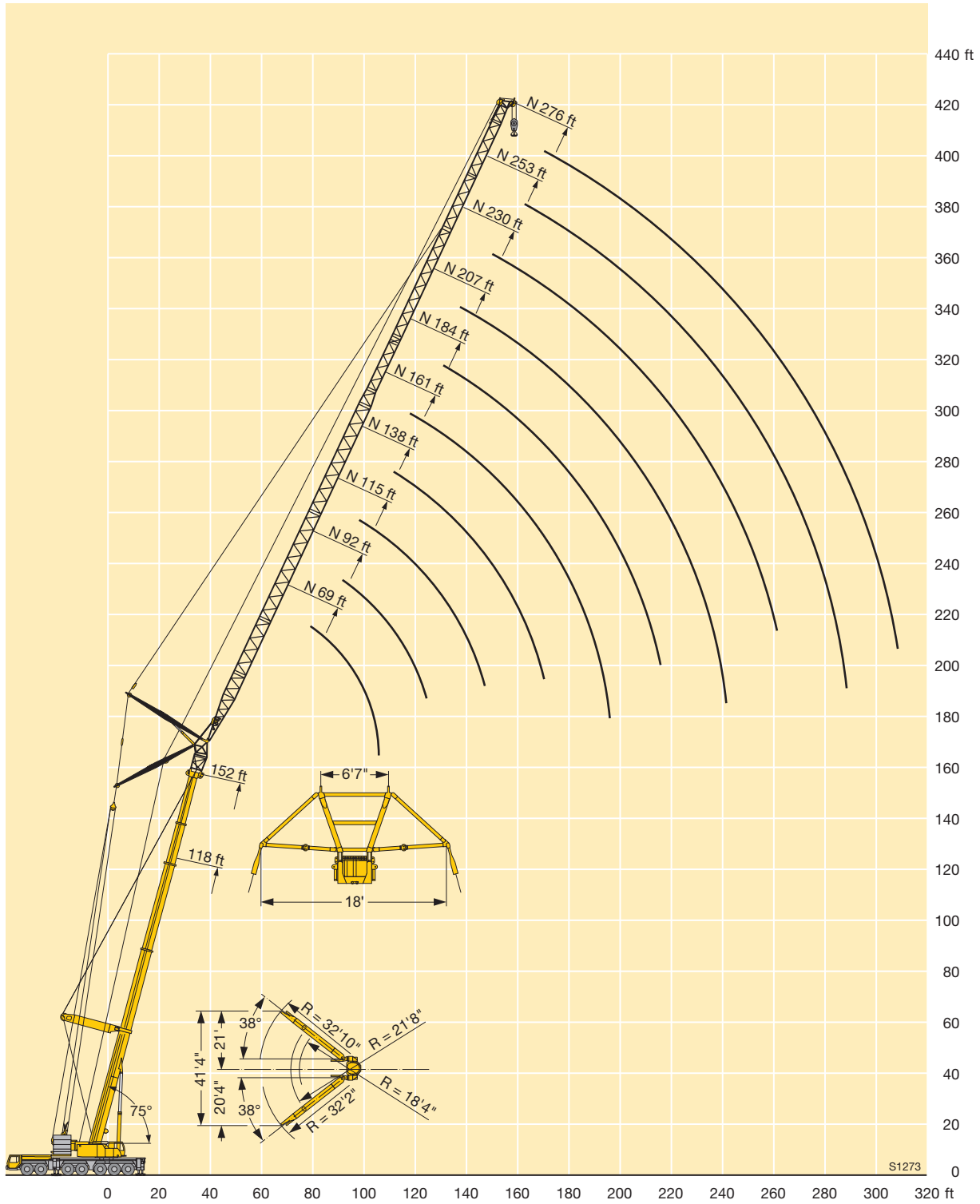
Forces de levage à la fléchette treillis relevable avec flèche télescopique haubanée

ft	118 + 13 ft*										152 ft + 13 ft*										186 ft + 13 ft*						ft	
	ft										ft										ft							
	69	92	115	138	161	184	207	230	253	276	69	92	115	138	161	184	207	230	253	276	69	92	115	138	161	184		207
70	111																											70
75	106	96.5																										75
80	99.5	95.5								77.5																		80
85	93.5	89.5								74																		85
90	88	84.5	79.5							70.5	65																	90
95	83.5	80	76.5	69.5						68	63	56.9																95
100		75.5	72.5	68.5						65.5	60.5	56.2																100
105		72	69	66.5							58.2	54																105
110		68.5	65.5	63	58						56.2	51.9	47.2															110
115		65.5	62.5	60	56.9	50					54.3	50	46	41.7														115
120			59.6	57.2	54.9	49.5					52.8	48.4	44.3	41.2														120
125			57	54.7	52.3	48.2					46.9	42.7	39.7															125
130			54.6	52.3	50.1	47	41.7				45.5	41.2	38.4	34.2														130
135			52.4	50.1	47.9	45.7	41	34.9			44.2	39.9	37.1	33.3	29.3													135
140				48.1	45.9	44.2	40	34.6			43.2	38.8	35.8	32.2	28.9													140
145				46.2	44.1	42.4	39	33.8			42.5	37.7	34.7	31.1	28													145
150				44.4	42.3	40.6	38.2	33.1	28.8		41.6	36.6	33.8	30.1	27.1	23.7												150
155				42.8	40.7	39	37	32.5	28.4			35.6	33	29.1	26.3	23.2												155
160				41.1	39.2	37.5	35.6	31.8	27.9			34.9	32.1	28.3	25.5	22.5	19.1											160
165					37.8	36.1	34.3	31.2	27.4	22.6		34.3	31.4	27.6	24.7	21.9	19											165
170					36.4	34.8	32.9	30.6	26.9	22.6		33.7	30.6	27	23.9	21.3	18.5	15										170
175					35.1	33.5	31.7	29.6	26.4	22.4			29.9	26.4	23.3	20.7	18	14.6										175
180					33.7	32.3	30.5	28.4	26	22.1			29.4	25.8	22.7	20.1	17.5	14.3										180
185						31.2	29.4	27.3	25.6	21.8			28.9	25.2	22.2	19.6	17.1	13.9										185
190						30.1	28.4	26.3	25.1	21.5			28.1	24.6	21.8	19.1	16.6	13.5										190
195						29	27.4	25.3	24.4	21.2			27.2	24.1	21.3	18.6	16.2	13.1										195
200						27.8	26.4	24.4	23.6	20.9				23.8	20.8	18.2	15.7	12.8										200
205						26.8	25.5	23.5	22.7	20.5				23.3	20.4	17.8	15.3	12.5										205
210							24.6	22.7	21.8	20				22.6	19.9	17.4	15	12.1										210
215							23.6	21.9	21	19.2				21.9	19.5	17	14.6	11.8										215
220							22.7	21.1	20.3	18.5					19.2	16.6	14.3	11.5										220
225							21.9	20.3	19.5	17.7					18.8	16.2	14	11.3										225
230								19.6	18.8	17					18.2	15.8	13.6	11										230
235								18.8	18.1	16.4					17.6	15.5	13.3	10.8										235
240								18.1	17.5	15.7					17	15.3	13	10.5										240
245								17.3	16.8	15.1					15	12.7	10.3											245
250								16.7	16.1	14.5						14.5	12.4	10.1										250
255								16	15.4	13.9						14	12.1	9.9										255
260									14.8	13.4						13.5	11.9	9.6										260
265									14.2	12.8							11.6	9.4										265
270									13.6	12.2							11.2	9.2										270
275									13	11.8							10.7	8.9										275
280										11.4							10.3	8.5										280
285										10.9							9.9	8.1										285
290										10.5								7.8										290
295										10.1								7.4										295
300										9.7								7										300
305																		6.7										305

* adapter / pièce d'adaptateur

TAB 146506

Lifting heights Hauteurs de levage



Lifting capacities on the luffing lattice jib with guyed telescopic boom

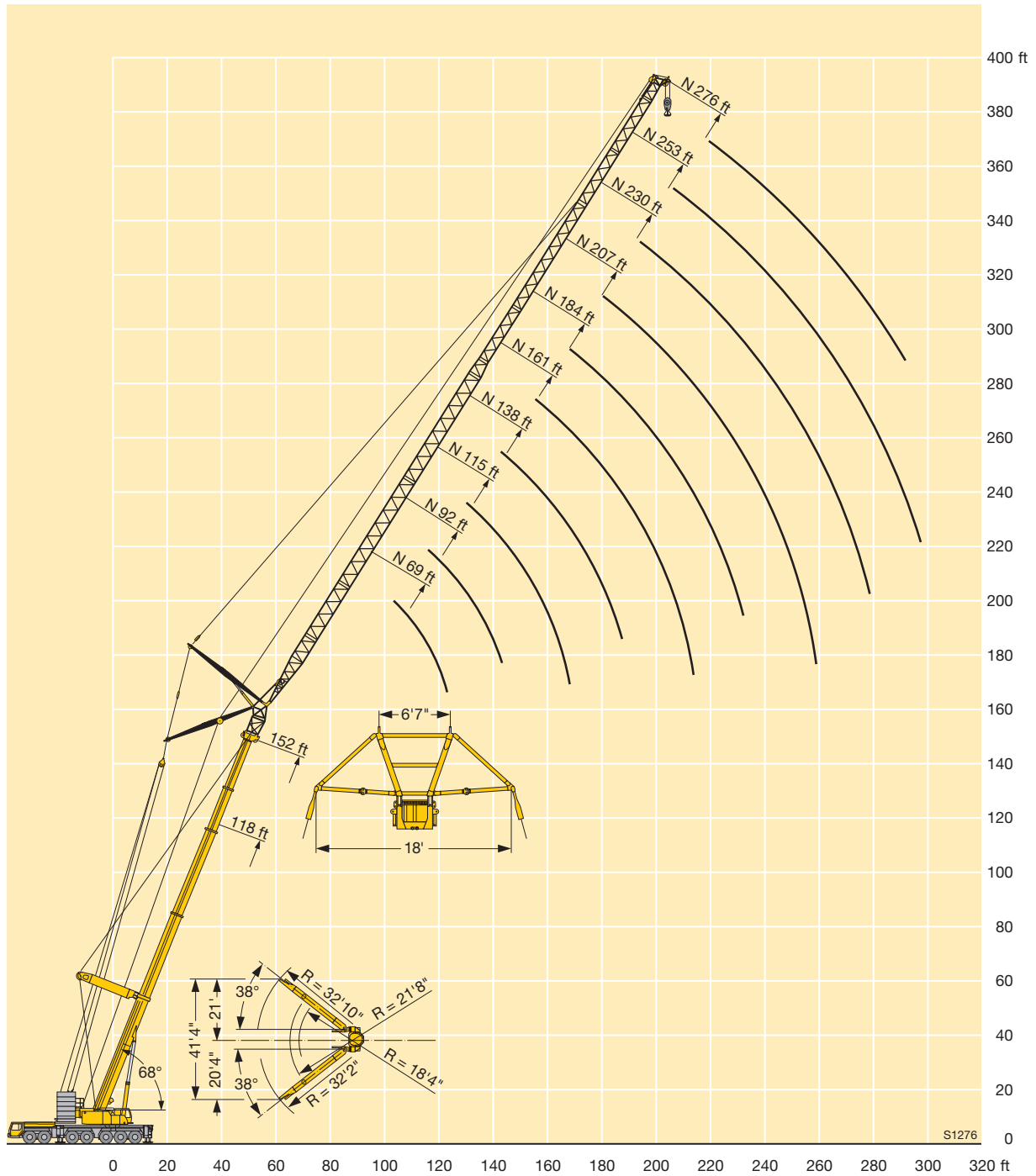
Forces de levage à la fléchette treillis relevable avec flèche télescopique haubanée

		118 + 13 ft*										152 ft + 13 ft*										186 ft + 13 ft*								
		ft										ft										ft								
		69	92	115	138	161	184	207	230	253	276	69	92	115	138	161	184	207	230	253	276	69	92	115	138	161	184	207	ft	ft
90	75.5																												90	
95	73																												95	
100	69	62.5																											100	
105	65.5	62.5										55.6																	105	
110	62.5	59.4										53.1																	110	
115		56.6	52.3									50.9	46.6																115	
120		54	51.4									49	45.9														37.2		120	
125		51.6	49									43.9															35.5		125	
130		49.5	46.9	44.2								42.2	39														34	31.2	130	
135			44.9	42.8								40.6	37.8														32.7	30.2	135	
140			43.1	41	37.4							39.1	36.4	32.5													28.9	25.2	140	
145			41.4	39.3	37.2							35.1	32.3														27.7	25.1	145	
150			39.8	37.7	35.7							33.9	31														26.7	24	150	
155			38.2	36.2	34.2	31.9						32.6	29.9	27.6													25.7	23	155	
160				34.9	32.9	31.2						31.4	28.8	27.2													22.1	20.2	160	
165				33.5	31.6	30						30.2	27.8	26.2													21.4	19.3	165	
170				32.3	30.4	28.8	26.8					29.1	26.7	25.3	22.5												20.7	18.5	170	
175				31	29.3	27.7	25.8					25.7	24.4	21.9													20.1	17.8	175	
180					28.2	26.6	24.8	22				24.8	23.5	21.2	18.4												19.7	17.2	180	
185					27.2	25.6	23.8	21.8				23.9	22.6	20.4	18.3												16.7	14.7	185	
190					26.2	24.7	22.9	20.8				23	21.8	19.7	17.7												16.1	14.1	190	
195					25.2	23.8	22	20	18.9			21	18.9	17	14.8												15.6	13.6	195	
200					24.2	22.9	21.2	19.2	18.4	15.9		20.2	18.2	16.4	14.4												15.3	13.2	200	
205						22.1	20.4	18.4	17.6	15.7		19.5	17.5	15.7	13.9	11.7											12.8	10.5	205	
210						21.3	19.6	17.6	16.8	15		18.8	16.8	15.1	13.4	11.7											12.4	10.2	210	
215						20.4	18.9	16.9	16.1	14.3		18.2	16.1	14.4	12.9	11.3											12	9.8	215	
220						19.6	18.2	16.2	15.5	13.6			15.5	13.8	12.4	11	8.8										11.7	9.5	220	
225							17.5	15.6	14.8	13			15	13.3	11.9	10.5	8.6										11.6	9.2	225	
230							16.8	15	14.2	12.4			14.4	12.7	11.4	10	8.2											8.9	7.2	230
235							16.2	14.4	13.6	11.8			13.9	12.2	10.9	9.5	7.7											8.5	6.9	235
240							15.5	13.8	13	11.2				11.7	10.4	9	7.2											8.3	6.6	240
245							14.8	13.3	12.5	10.7				11.2	9.9	8.5	6.7											8.1	6.3	245
250								12.7	11.9	10.2				10.8	9.4	8.1	6.3												6.1	250
255								12.2	11.4	9.7				10.4	9	7.6	5.8												5.8	255
260								11.7	11	9.2				10	8.6	7.2	5.4												5.6	260
265								11.3	10.5	8.7					8.2	6.8	5												5.5	265
270									10	8.3					7.8	6.4	4.7													270
275									9.6	7.9					7.4	6	4.3													275
280									9.2	7.5					7	5.7	3.9													280
285									8.8	7.1						5.3	3.6													285
290									8.4	6.7						5	3.3													290
295									8.1	6.3						4.7	2.9													295
300										6						4.4	2.6													300
305										5.6							2.3													305
310										5.3																				310

* adapter / pièce d'adaptateur

TAB 146509

Lifting heights Hauteurs de levage



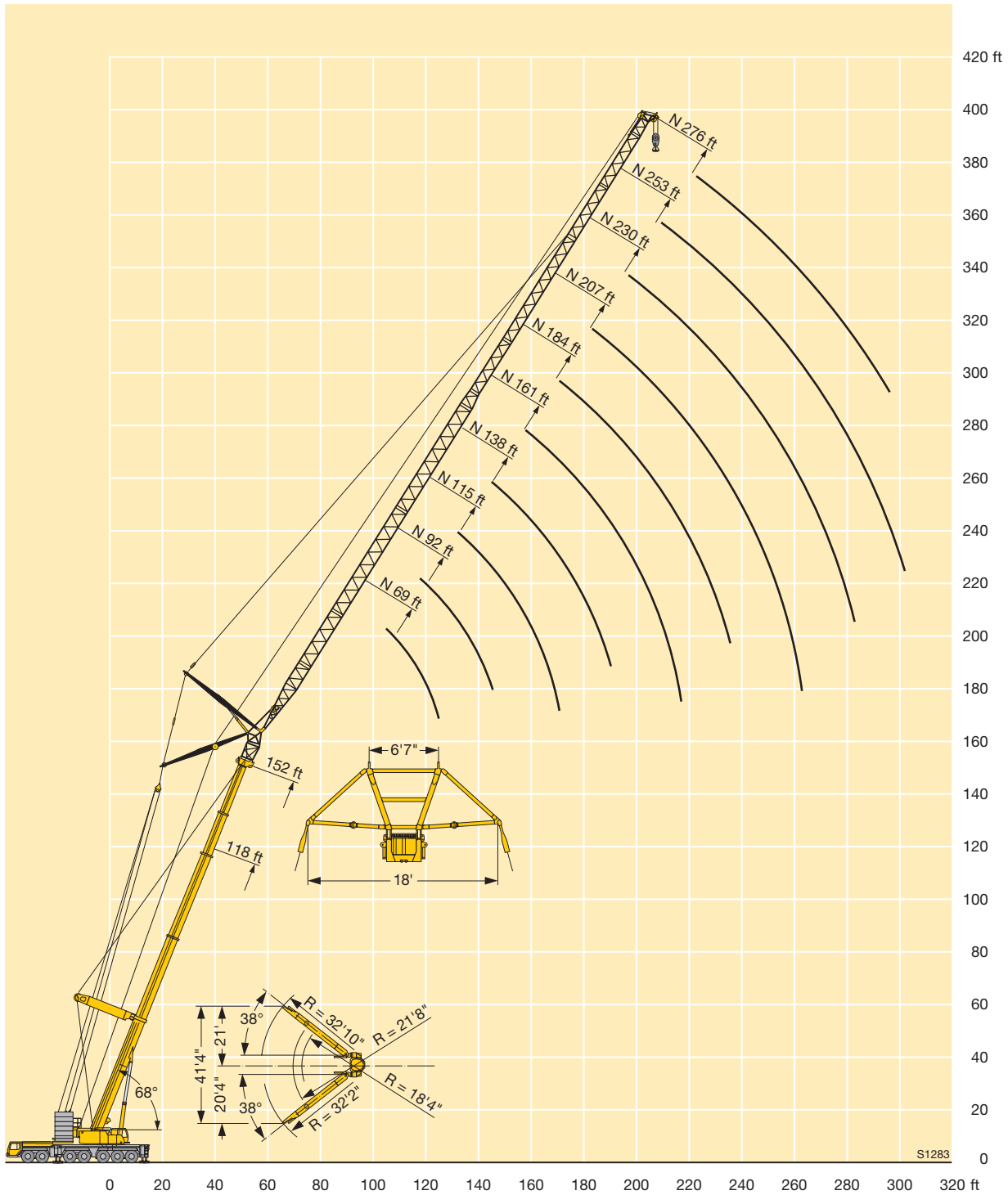
Lifting capacities on the luffing lattice jib with guyed telescopic boom

Forces de levage à la fléchette treillis relevable avec flèche télescopique haubanée

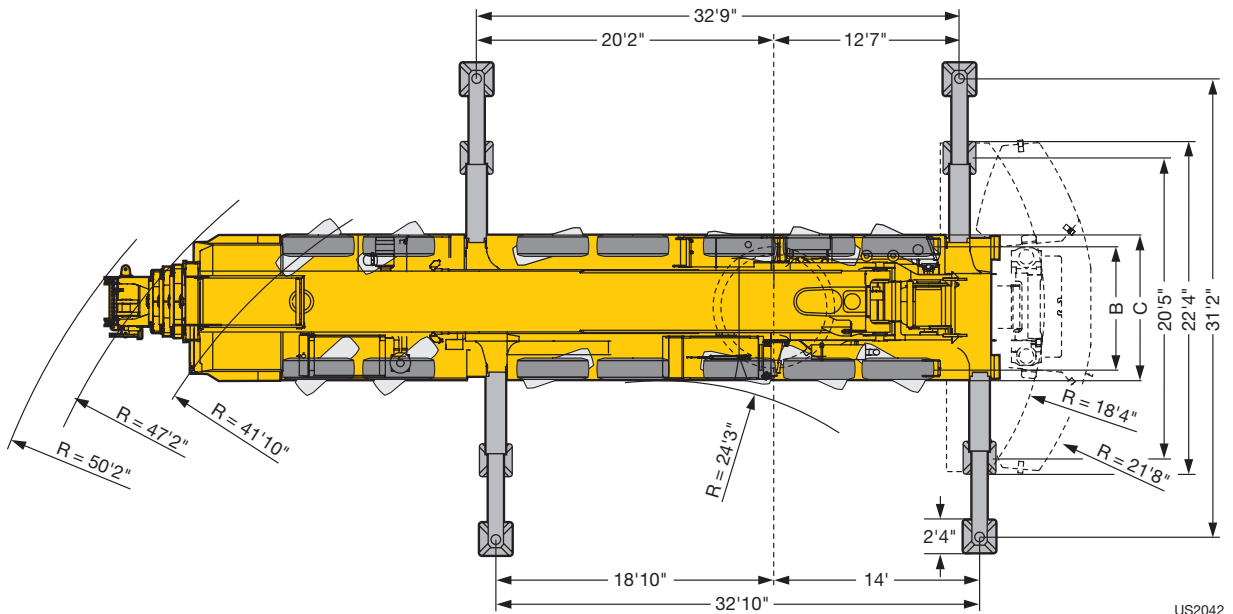
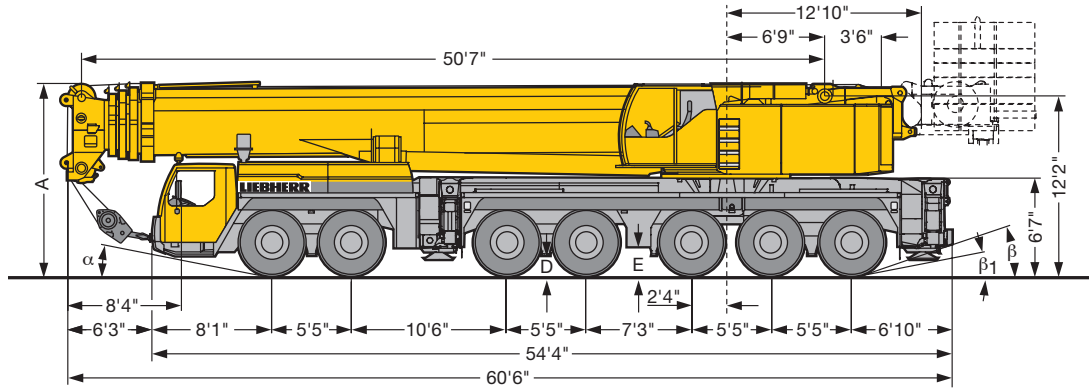
ft	118 ft + 13 ft*								152 ft + 13 ft*								186 ft + 13 ft*					ft								
	ft								ft								ft													
	115	138	161	184	207	230	253	276	115	138	161	184	207	230	253	276	115	138	161	184	207									
115	61																						115							
120	59.9																						120							
125	57.5																						125							
130	54.8	51.7							39														130							
135	52.3	50.4							37.8														135							
140	49.9	48.5	44.1						36.4	32.5										25.2			140							
145	47.7	46.4	43.9						35.1	32.3										25.1			145							
150	45.7	44.4	42.5						34.1	31										24			150							
155	43.8	42.5	41	37.3					33.1	29.9	27.6									23	20.6		155							
160		40.7	39.5	36.8					32.3	28.9	27.2									22.1	20.2		160							
165		39.1	37.8	35.8					31.6	28.1	26.2									21.4	19.3		165							
170		37.5	36.2	34.9	31.6				31.5	27.4	25.3	22.5								20.7	18.5	16.5	170							
175		36	34.8	33.6	31				26.7	24.6	21.9									20.1	17.8	15.9	175							
180			33.4	32.3	30.3	26.2			26	23.9	21.2	18.4								19.7	17.2	15.3	12.4	180						
185			32.1	31	29.6	26			25.5	23.3	20.5	18.3								16.7	14.7	12.3		185						
190			30.8	29.7	28.4	25.4			25.3	22.7	19.8	17.7								16.1	14.1	11.8		190						
195			29.7	28.6	27.3	24.9	21.9			22.1	19.3	17	14.8							15.6	13.6	11.3	9.6	195						
200			28.6	27.4	26.2	24.3	21.6	18.4		21.5	18.8	16.4	14.4							15.3	13.2	10.9	9.3	200						
205				26.4	25.1	23.6	21.1	18.3		21.1	18.2	15.9	13.9	11.7								12.8	10.5	8.9	205					
210				25.4	24.1	22.6	20.7	17.9		20.8	17.6	15.3	13.4	11.7								12.4	10.2	8.6	210					
215				24.4	23.2	21.6	20.2	17.5		20.8	17	14.8	12.9	11.3								12	9.8	8.2	215					
220				23.5	22.3	20.7	19.8	17.1			16.5	14.3	12.4	11	8.8							11.7	9.5	7.8	220					
225					21.4	19.9	19.3	16.8			16.1	13.9	11.9	10.6	8.7								11.6	9.2	7.5	225				
230					20.6	19.1	18.6	16.4			15.9	13.4	11.6	10.1	8.3									8.9	7.2	230				
235					19.8	18.3	17.7	16.1			15.8	12.9	11.2	9.7	7.9										8.5	6.9	235			
240					19.1	17.6	17	15.5				12.5	10.8	9.4	7.5											8.3	6.6	240		
245					18.4	16.8	16.3	14.9				12.2	10.5	9	7.2											8.1	6.3	245		
250						16.1	15.6	14.2				12	10.2	8.7	6.8													6.1	250	
255						15.5	14.9	13.5				12	9.8	8.4	6.4														5.8	255
260						14.9	14.3	12.8				12	9.5	8.1	6.2														5.6	260
265						14.3	13.7	12.3					9.3	7.8	5.9														5.5	265
270							13.1	11.8					9.1	7.5	5.6															270
275								12.5	11.4					9.1	7.3	5.4														275
280								12.1	11					9.1	7	5.1														280
285									11.7	10.6					6.7	4.9														285
290										11.3	10.2					6.6	4.6													290
295											10.9	9.8					6.6	4.4												295
300												9.4					6.6	4.1												300
305												9						3.9												305
310												8.7							3.8											310
315																			3.8											315
320																			3.8											320
325																			3.8											325

* adapter / pièce d'adaptateur

Lifting heights Hauteurs de levage



Dimensions Encombrement



US2042

	Dimensions / Encombrement									
	A	A 6" / 4" **	B	C	D	E	α	β	β_1	
445/95 R 25 (16.00 R 25)	13'1"	12'10"	8'4"	9'10"	1'3"	1'6"	11°	19°	11°	
525/80 R 25 (20.5 R 25)	13'1"	12'10"	8'10"	10'7"	1'3"	1'6"	11°	19°	11°	

* lowered / abaissé

Weights Poids



Axle Essieu	1	2	3	4	5	6	7	Total weight (lbs) Poids total lbs
lbs	26400	26400	26400	26400	26400	26400	26400	185000 lbs



Load (kips) Forces de levage kips	No. of sheaves Poulies	No. of lines Brins	Weight lbs Poids lbs
525.5	11	22	8149
443	9	18	7268
376	7	14	5947
285	5	10	5066
187	3	6	3964
82	1	3	3083
28	-	1	1321

Working speeds Vitesses



		1	2	3	4	5	6	7	8	9	10	11	12	R 1	R 2	
445/95 R 25 (16.00 R 25)		3.5	4.5	5.8	7.5	9.5	12.2	16.1	20.6	26.7	34.2	43.4	50	3.8	4.9	39.7 %



Drive Mécanismes	infinitely variable en continu	Rope diameter / Rope length Diamètre du câble / Longueur du câble	Max. single line pull Effort au brin maxi.
	0 – 426 ft/min single line ft/min au brin simple	1" / 1378 ft	28415 lbs
	0 – 426 ft/min single line ft/min au brin simple	1" / 1378 ft	28415 lbs
	0 – 492 ft/min single line ft/min au brin simple	1" / 2542 ft	28415 lbs
	0 – 1.5 rpm		
	approx. 70 seconds to reach 82° boom angle env. 70 s jusqu'à 82°		
	approx. 380 seconds for boom extension from 51 ft – 197 ft env. 380 s pour passer de 51 ft – 197 ft		

Equipment Equipment

Crane carrier	
Frame	Self-manufactured, torsion-resistant box-type design of high-tensile fine grained structural steel.
Outriggers	Four hydraulically extendable sliding beams with hydraulic supporting rams and supporting pads fixed for the transport. The front outrigger casing is located between axles 2 and 3, the rear outrigger casing at the rear of the carrier. Supporting basis: 32,8 ft longitudinally x 31,2 ft transversally.
Engine	8-cylinder Diesel, make Liebherr, type D9508 A7, watercooled, output 450 kW (612 h.p.) at 1900 rpm. Exhaust emissions acc. to 97/68/EG stage 3 and EPA/CARB Tier 3. Max. torque 2095 lbs-ft at 1100 – 1500 rpm. Fuel reservoir: 153 gallons.
Transmission	Automatic transmission system with converter control clutch, make ZF, type TC-TRONIC with 12 forward speeds and 2 reverse speeds, transfer case with transfer differential.
Axles	Robust crane carrier axles. All axles steered, axles 1, 3 and 5 are driven planetary axles, axle 3 with longitudinal differential, all driven axles with transverse differential.
Cardan shafts	All cardan shafts with 70° diagonal toothing.
Suspension	All axles on hydropneumatic suspension with automatic levelling control. Automatic axle pressure equalization between the axle pairs 1 + 2, 3, 4 + 5 and 6 + 7. The suspension can be blocked hydraulically.
Tyres	14-fold, all axles equipped with single tyres. Tyre size: 445/95 R 25 (16.00 R 25).
Steering	ZF semi-integral power steering, dual circuit system with hydraulic servo mechanism and additional emergency pump driven by the axle, acting on the mechanically interlinked axles 1 – 3. Axles 4 – 7 are steered electrohydraulically during road displacement and fixed to straight displacement from 18 mph. Steering in accordance with EC recommendation 70/311/EEC.
Brakes	Service brake: All-wheel servo-air brake, dual circuit system. Additional brakes: Exhaust pipe flap retarder, retarder mounted to shift gear, TELMA-type eddy current brake (optional). Hand brake: Spring-loaded brake, acting on all wheels of the 2nd to the 7th axle. Brakes acc. to EG directives 71/320 EWG.
Driver's cab	Spacious cab of sheet steel, on rubber shock absorbers. Safety glas windows.
Electrical system	Modern data bus technology, 24 Volt DC, 2 batteries of 170 Ah each, lighting acc. to German regulations StVZO.

Crane superstructure	
Frame	Self-manufactured, torsion-resistant welded construction of high-tensile fine grained steel, linked to the carrier by a three-row roller slewing rim for continuous rotation.
Crane engine	6-cylinder Diesel engine, make Liebherr, type D936L A6, watercooled, 240 kW (326 HP) at 1800 rpm, max. torque 1125 lbs-ft at 1500 rpm. Exhaust emissions acc. to 97/68/EG and EPA/CARB. Fuel tank: 66 gallons.
Crane drive	Diesel-hydraulic with 4 axial piston variable displacement pumps with servo-control and capacity regulation.
Control	Two self-centering control levers (joy-stick type). Stepless control of all crane motions by variation of the hydraulic pumps, additional speed regulation by variation of the Diesel engine speed.
Hoist gear	Axial piston variable displacement motor, Liebherr rope winch with integrated planetary gear and spring-loaded static brake.
Luffing gear	2 differential rams with safety check valve.
Slewing gear	Hydraulic motor, planetary gear, slewing pinion and spring-loaded static brake.
Crane cab	Spacious cab in sheet steel version, with safety glazing, operating and control elements. Cab inclinable to the rear.
Safety devices	LICCON safe load indicator, hoist limit switches, safety valves against rupture of pipes and hoses.
Counterweight	220500 lbs counterweight comprising: 1 base slab 33000 lbs + 11100 lbs, 6 slabs of 22000 lbs each, 4 slabs of 11100 lbs each. Hydraulic ballasting device at the counterweight frame.
Telescopic boom	1 base section and 4 telescopic sections. All telescopic sections extendable individually by rapid-cycle telescoping system TELEMATIK. Boom length: 51 ft – 197 ft.
Electrical system	Modern data bus technology, 24 Volt DC, 2 batteries of 170 Ah each.

Additional equipment	
Telescopic boom guying system	Consisting of guying frames with stay ropes, tilttable hydraulically into transport position.
Bracing	Spacer 18' width
Lattice jibs	Fixed lattice jib 23 ft – 184 ft long, at 0°, 20° or 40°, lattice luffing jib 46 ft – 276 ft long.
2nd hoist gear	For 2-hook operation.
3rd hoist gear	For the variation of the lattice luffing jib.
Additional ballast	4 additional counterweight slabs of 22000 lbs each for a total counterweight of 308600 lbs.
Drive 14 x 8	The 6th axle is driven additionally.

Other items of equipment available on request.

Equipment Équipement

Châssis porteur		Partie tournante	
Châssis	Châssis résistant à la torsion de fabrication Liebherr, en acier à grains fins très résistant.	Châssis	Structure soudée de fabrication Liebherr, résistante à la torsion, en acier à grains fins très résistant. Une couronne d'orientation à roulements à 3 rangées, servant d'élément de liaison avec le châssis porteur, permet une rotation illimitée de la partie tournante.
Stabilisateurs	Quatre poutres télescopiques hydrauliques avec vérins de calage hydrauliques et patins de calage fixes lors du transport. Le support avant des poutres télescopiques est fixé entre les essieux 2 et 3, le support arrière à l'arrière du châssis porteur. Base de calage: 32,8 ft long x 31,2 ft transversal.	Moteur de la grue	Diesel, 6 cylindres, marque Liebherr, type D936L A6, refroidi par eau, puissance 240 kW (326 ch) à 1800 rpm, couple max. 1125 lbs-ft à 1500 rpm. Emissions des gaz d'échappement conformes aux directives 97/68/EG et EPA/CARB. Réservoir à carburant: 66 gallons.
Moteur	Moteur diesel, 8 cylindres, fabriqué par Liebherr, de type D9508 A7, à refroidissement par eau, de 450 kW (612 ch) à 1900 rpm. Emissions des gaz d'échappement conformes aux directives 97/68/EG partie 3 et EPA/CARB Tier 3. Couple max. 2095 lbs-ft à 1100 – 1500 rpm. Capacité du réservoir à carburant: 153 gallons.	Entraînement	Diesel-hydraulique avec pompes à débit variable à 4 pistons axiaux, servocommande et régulation de la puissance.
Réducteurs	Système de réducteurs automatique avec convertisseur-embayage, marque ZF, type TC-TRONIC avec 12 marches AV et 2 marches AR, boîte de transfert avec différentiel répartiteur.	Commande	Deux manipulateurs à 4 directions, à centrage automatique. Régulation progressive de tous les mouvements de la grue par réglage des pompes hydrauliques. Régulation supplémentaire de la vitesse par réglage du régime du moteur diesel.
Essieux	Essieux robustes. Tous essieux directeurs, essieux 1, 3 et 5 moteurs, essieu 3 avec différentiel longitudinal, tous les essieux directeurs avec différentiel transversal.	Treuil de levage	Moteur à cylindrée variable à pistons axiaux, treuil Liebherr avec réducteur planétaire intégré et frein d'arrêt commandé par ressort.
Flasque de croisillons	Tous les flasques de croisillons avec denture en croix 70°.	Mécanisme de levage	2 vérins différentiels avec clapet de sécurité anti-retour.
Suspension	Tous les essieux sont suspendus hydro-pneumatiquement avec une régulation automatique de niveau. Compensation de charge sur les essieux 1 + 2, 3, 4 + 5 et 6 + 7. Suspension à blocage hydraulique.	Mécanisme d'orientation	Moteur hydraulique, réducteur planétaire, pignon du mécanisme d'orientation et frein d'arrêt commandé par ressort.
Pneumatiques	14 fois, chaque essieu est équipé de pneus. Monte de pneumatiques: 445/95 R 25 (16.00 R 25).	Cabine tourelle	Cabine spacieuse en tôle électrozinguée avec vitres de sécurité, instruments de commande et de contrôle, cabine inclinable vers l'arrière.
Direction	Direction hydraulique semi-bloc ZF, 2 circuits avec servocommande hydraulique et pompe de secours supplémentaire, entraînée par l'essieu, action sur les essieux 1 à 3 liés mécaniquement. En mode de translation sur route, direction électro-hydraulique des essieux 4 à 7 et conduite en ligne droite activée à partir de 18 mph. Direction conforme à la directive européenne 70/311/CEE.	Dispositif de sécurité	Contrôleur de charge LICCON, limiteur de course, clapets de sécurité contre les ruptures de conduites et de flexibles.
Freins	Frein de service: servo-frein pneumatique pour toutes les roues, 2 circuits. Freins supplémentaires: frein avec clapet sur échappement, ralentisseur, monté sur boîte de vitesse, frein Telma (en option). Frein à main: accumulateur à ressort, agissant sur toutes les roues des essieux 2 à 7. Freins conformes aux directives européennes 71/320 CE.	Contrepoids	Contrepoids de 220500 lbs composé de: 1 plaque de base de 33000 lbs + 11100 lbs, 6 éléments de 22000 lbs, 4 éléments de 11100 lbs. Dispositif de lestage hydraulique au support contrepoids.
Cabine porteur	Cabine spacieuse en tôle électrozinguée, suspension par silent blocs. Vitres de sécurité.	Flèche télescopique	1 élément de base et 4 éléments télescopiques. Tous les éléments télescopiques peuvent être sortis individuellement grâce au système de télescopage rapide TELEMATIK. Longueur de la flèche: 51 ft – 197 ft.
Circuit électrique	Technologie de bus de données moderne, courant continu 24 Volts, 2 batteries de chacune 170 Ah, éclairage conforme au code de la route allemand.	Circuit électrique	Technologie de bus de données moderne, courant continu 24 Volts, 2 batteries de chacune 170 Ah.

Equipment Équipement

Équipement supplémentaire

Haubanage de la flèche télescopique	Composé du chevalet d'haubanage avec haubanage du câble, rabattable hydrauliquement en position de transport.
Haubanage	Pièce intermédiaire de largeur 18'
Fléchette à treillis	Fléchette à treillis fixe de 23 ft – 184 ft, montage possible sous 0°, 20° ou 40°, fléchette à treillis à volée variable de 46 ft – 276 ft.
2ème treuil de levage	Pour le mode 2 crochets.
3ème treuil de levage	Pour le réglage de la fléchette à treillis.
Contrepoids complémentaire	4 plaques complémentaires de 22000 lbs, pour une masse totale de 308600 lbs.
Entraînement 14 x 8	Le 6ème essieu est également entraîné.

Autres équipements supplémentaires sur demande.



Liebherr-Werk Ehingen GmbH

Postfach 1361, 89582 Ehingen, Germany

☎ +49 73 91 5 02-0, Fax +49 73 91 5 02-33 99

www.liebherr.com, E-mail: info.lwe@liebherr.com